

MATERIALS

TAPIR WORKS

TAPIR WORKS CONTRACT Vol.03 - 04



FOLLOW US

INSTAGRAM: @TAPIRWORKS
WWW.TAPIRWORKS.COM

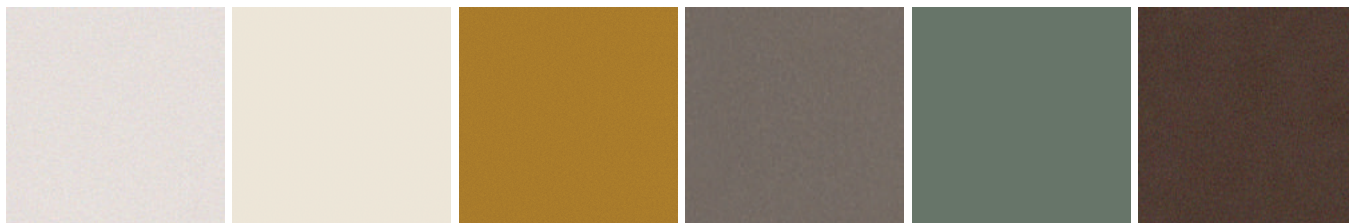
TAPIR WORKS 03012020 133027103
03012020 133027103 03012020 133027103
03012020 133027103 03012020 133027103
03012020 133027103 03012020 133027103

CONTACT US

TEL: +66 2000 5999 | +66 81922 6515
EMAIL: INFO@TAPIRWORKS.COM
LINE OA: @TAPIRWORKS

FINISH & MATERIALS

ALUMINIUM POWDER COLOURS ISO #6063 MARINE GRADE



WHITE 321C

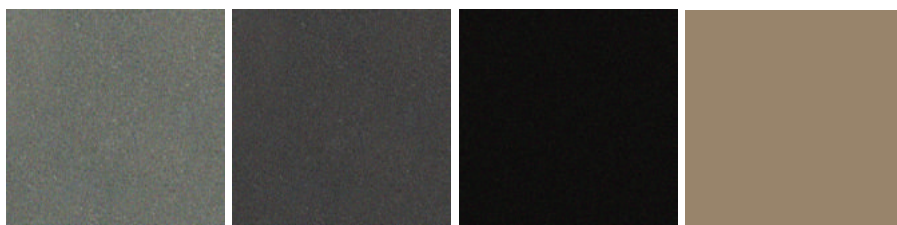
IVORY WHITE
PFS-53207

YELLOW
JE314C

CHAMPAGNE JW38DC

GREEN JS333C

BROWN C43189S3LT



GREY JX390C

CHARCOAL AJY3044D

BLACK JN30EC

NATURAL
W2021052901

Qualification: Heavy load cycles, UV Resistance, Easy Clean, Abrasion resistance, Eco Friendly recycling process.



FINISH & MATERIALS

POLYPROPYLENE (PP) ROPE Ø7/9/12 MM.



ORANGE R058



BLUE R059



GREEN R060



OLIVE GREEN TT-026



ASH WHITE R061



SILVER 8063



CHARCOAL Y-I70201

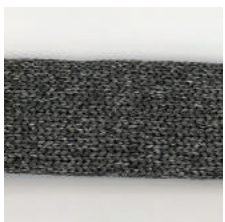


NATURAL ED64115A

POLYPROPYLENE (PP) PADDED BELT 45x18 MM.



GREY R081



CHARCOAL R083

HIGH-DENSITY POLYETHYLENE (HDPE) RESIN **ROUND WICKER** Ø8 MM.



ORANGE WT01767AEX



BLUE WT01714AEX



GREEN WT01713AEX

Qualification: Non-absorbent water-draining polyester ensures softness, comfort and rapid drying.



FINISH & MATERIALS

HIGH-DENSITY POLYETHYLENE (HDPE) RESIN **TWIST WICKER** Ø7/10 MM.



NATURAL
WT01305AT-R

GREY
WT01361AT

BLACK
WT01520AT

BEIGE

METAL GREY

HIGH-DENSITY POLYETHYLENE (HDPE) RESIN **RIPPLE WICKER** 50x3 MM.



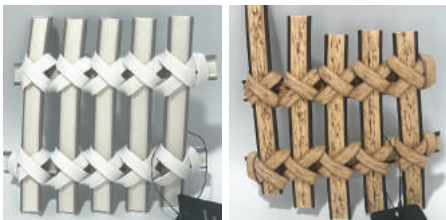
WHITE
WT00650A

TAUPE
WT00651A

CHARCOAL
WT00650A

BROMZE
WT00650A

HIGH-DENSITY POLYETHYLENE (HDPE) RESIN **PEAPOD WICKER** 12x4.5 MM.



WHITE
WT00480A

NATURAL
WT00818A

HIGH-DENSITY POLYETHYLENE (HDPE) RESIN **REED WICKER** Ø10 MM.



LIGHT NATURAL
EI1850

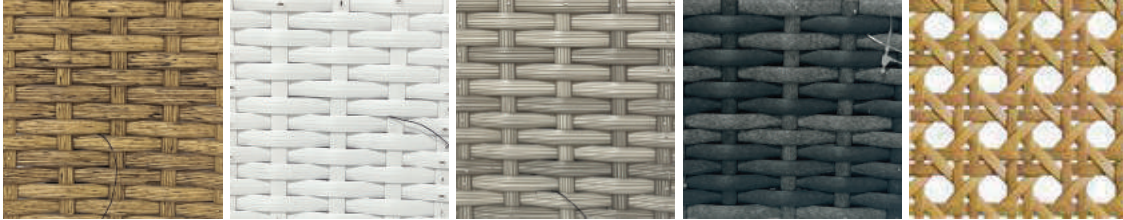
DARK NATURAL
EI1839A-2

Qualification: High suppleness, Tear resistance, UV resistance, weather resistance, and is non-toxic.



FINISH & MATERIALS

HIGH-DENSITY POLYETHYLENE (HDPE) RESIN **FLAT WEAVE WICKER** 7x1.6 MM.



NATURAL
FB99WK04649A-8L

ICE WHITE
FB99WK03722A

SILK WHITE
FB99WK03744A

CHARCOAL
FB99WK05529A-2L

NATURAL OCTAGONAL
WK8305A

POLYSTYRENE (PS) **SYNTHETIC WOOD** TABLE TOP



GERMAN TEAK COLOR BELGIUM TEAK COLOR

INORGANIC CLAY, SILICA & FELDSPAR POWDER **SINTERED STONE** TABLE TOP

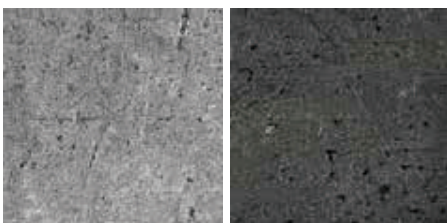


WHITE W03F

GREY G066Y

URANO IVORY

HIGH-PRESSURE LAMINATE (HPL) TABLE TOP



LIGHT GREY #0427

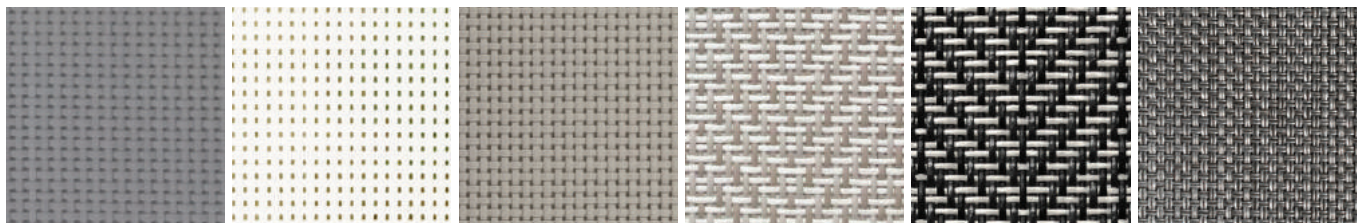
DARK GREY #0428

Qualification: Strong, Scratch resistance, durability and weather resistance.



FINISH & MATERIALS

MESH SLING (PVC COATED POLYESTER YARNS)



GREY T11497

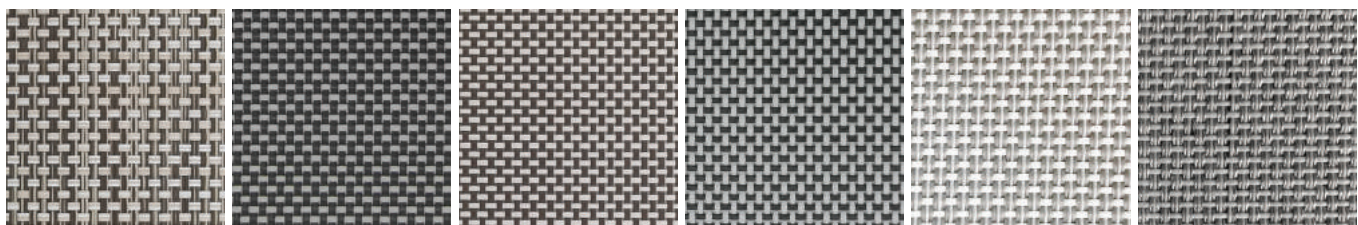
WHITE T11147

TAUPE T11173

WHEAT T111042

CHARCOAL T111041

DOVE GREY TX22059



LICHEN A10-4086

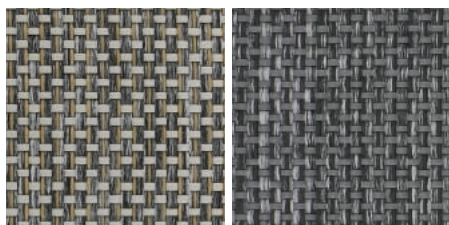
CHARCOAL T11304

PEWTER T11140

IRON GREY T11322

SLATE MS014

ASH GREY MS130



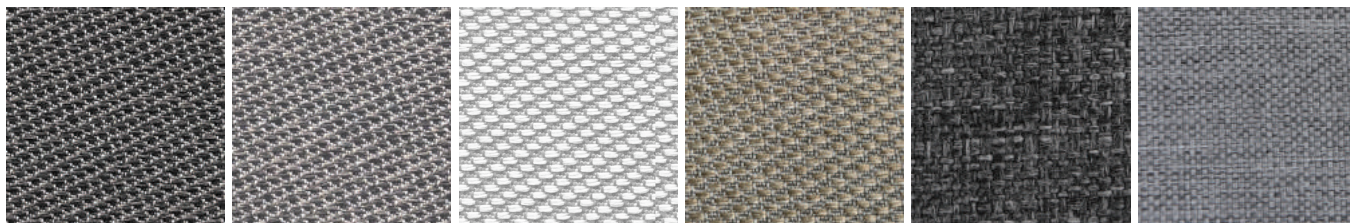
LICHEN GREY 15238554 DARK GREY BLENDS
15238555

Qualification: The Material characters guarantee sling is a very good performing outdoor material, impervious to UV, chlorine, salt & most other pollutants and contaminants, and it is also easy to maintain and clean.



FINISH & MATERIALS

100% SOLUTION-DYED FABRICS



BLACK I5838704

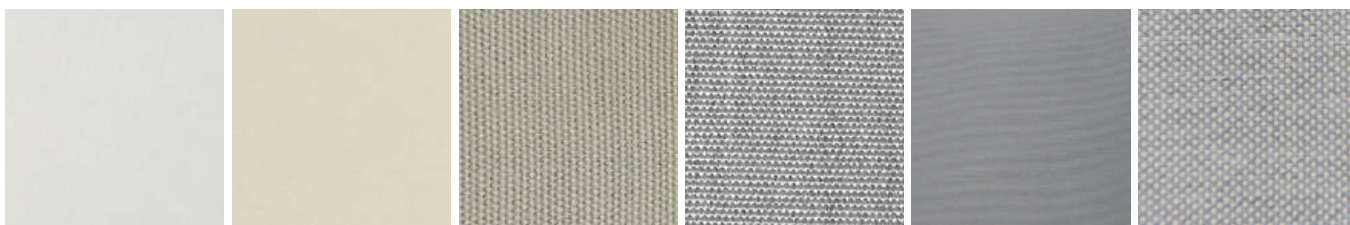
CHARCOAL I5838624A

COCONUT I5838604A

CHAMPAGNE
I5838614A

YL DARK GREY
W1836-002

YL LIGHT GREY
W2914-002



WHITE QQ08056

OFF WHITE QQ08013

TAUPE QQ08044

SILVER QQ08071

GREY QQ08042

YL BEIGE
WX2328-034

Qualification: Water-repellent and stain-resistant treatment. Cushions are crafted to provide years of comfort and performance in a variety of climates and conditions.

