

MATERIALS

TAPIR WORKS

FOR KUN DESIGN & TAPIR WORKS Vol.01 - 02



FOLLOW US

INSTGRAM: @TAPIRWORKS
WWW.TAPIRWORKS.COM

TAPIR WORKS COMPANY LIMITED

Summer Lasalle, Building A2, Room 213-214,
NO. 846, Lasalle Road, Bangna-Tai
Bangna, Bangkok 10260 Thailand

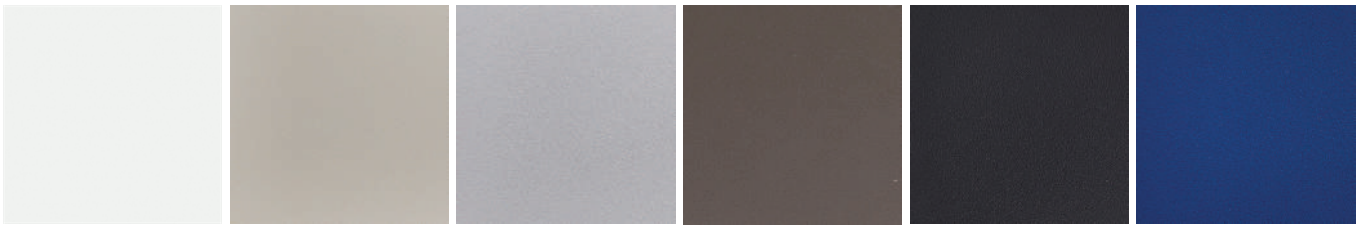
CONTACT US

TEL: +66 2000 5999 | +66 81922 6515
EMAIL: INFO@TAPIRWORKS.COM
LINE OA: @TAPIRWORKS

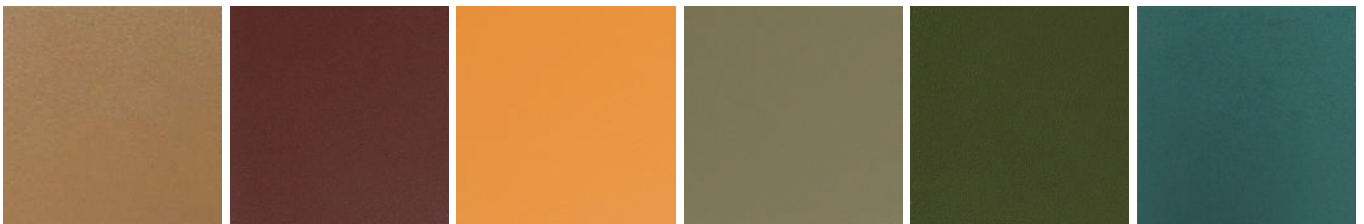


FINISHES KUN DESIGN & TAPIR WORKS RANGE

ALUMINIUM FRAME COLOURS THICKNESS 1.8 MM. (24)



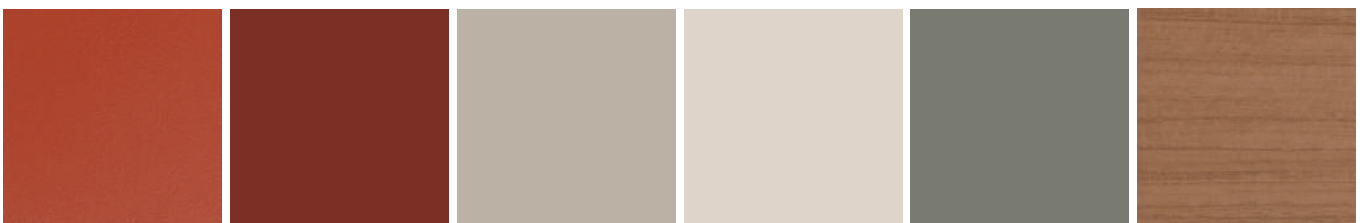
WHITE MAT 120037I OLIVE GREY 1215966 SILVER GREY 1216152 TAUPE 72522 BLACK MAT 13569A VIVID BLUE 14995A



SANDSTONE 48381H TERRACOTTA 14797A ORANGE 1219624 OLIVE GREEN 1219626 JUNIPER GREEN 14940A DARK GREEN 4666HA



ANTHRACITE 72412 MIDNIGHT BLUE 1219623 CURCUM 1216034 CEMENT 70576 SKY BLUE 14994A PINK 1219622



MEGMA PE7001 RED OCHER 680-48431H NUTMEG 491098HS SAND 70108 MOSS GREEN 16050A TEAK COLOUR

Qualification: Heavy load cycles, UV Resistance, Easy Clean, Abrasion resistance, Eco Friendly recycling process.

Tapir Works Studio
Summer Lasalle Avenue, Building A2, 1st Floor, Unit 213-214, Lasalle Road (Sukhumvit 105)
Bangna Tai, Bangna, Bangkok 10260 | T. +66 2000 5999 | E. Info@tapirworks.com

TAPIR WORKS



FINISHES KUN DESIGN & TAPIR WORKS RANGE

PVC ROPE Ø7 MM. (12)



SAND HF-006

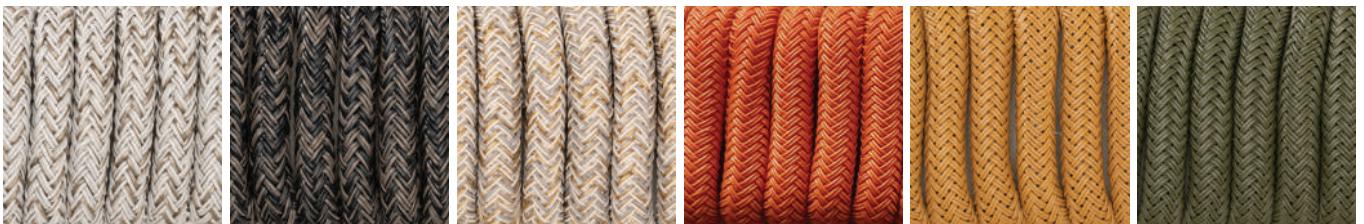
AQUAMARINE HF-007

GREEN HF-008

CARBON HF-009

DARK GREY HF-010

LIGHT GREY 44219



GREY HF-001

DARK BROWN HF-002

HONEY HF-021

ORANGE HF-023

CAMEL HF-024

JASPER HF-025

POLYPROPYLENE (PP) ROPE Ø7 MM. (7)



SAND HF-006

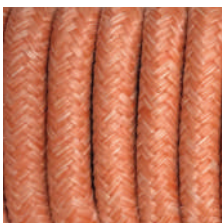
AQUAMARINE HF-007

GREEN HF-008

CARBON HF-009

DARK GREY HF-010

LIGHT GREY HF-011



ORANGE HF-023

Qualification: Water and stain repellent/resistant to UV Rays

Tapir Works Studio
Summer Lasalle Avenue, Building A2, 1st Floor, Unit 213-214, Lasalle Road (Sukhumvit 105)
Bangna Tai, Bangna, Bangkok 10260 | T. +66 2000 5999 | E. Info@tapirworks.com

TAPIR WORKS



FINISHES KUN DESIGN & TAPIR WORKS RANGE

PVC STRAPS 18 MM. (10)



WHITE HF-0020

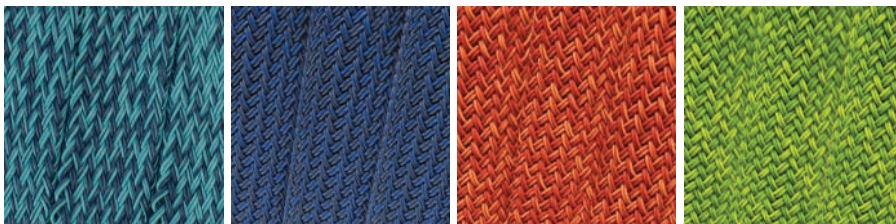
BEIGE 7344

GREY HF-5111

TAUPE 5015

ANTHRACITE 6601

CARBON HF-009



AQUAMARINE HF-007

NAVY BLUE HF-008

NACARAT HF-036

GREEN HF-037

POLYPROPYLENE (PP) STRAPS 16 MM. (7)



GREY-WHITE HF-004

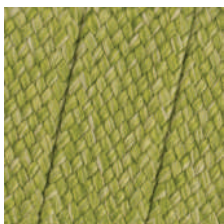
BEIGE 7344

SAND HF-006

MOCCA 160102107

ANTHRACITE SM-10063

BLACK 7360



GREEN HF-008

Qualification: Water and stain repellent/resistant to UV Rays

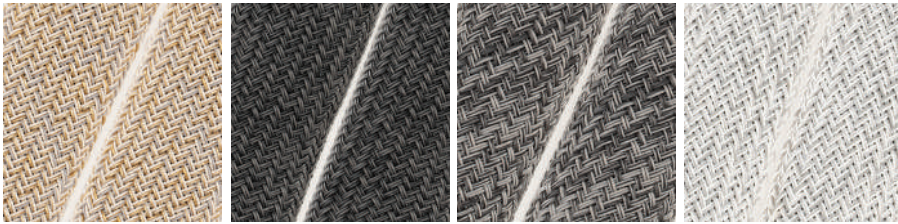
Tapir Works Studio
Summer Lasalle Avenue, Building A2, 1st Floor, Unit 213-214, Lasalle Road (Sukhumvit 105)
Bangna Tai, Bangna, Bangkok 10260 | T. +66 2000 5999 | E. Info@tapirworks.com

TAPIR WORKS



FINISHES KUN DESIGN & TAPIR WORKS RANGE

100% PVC LOOP STRAPS 25 MM. (4)



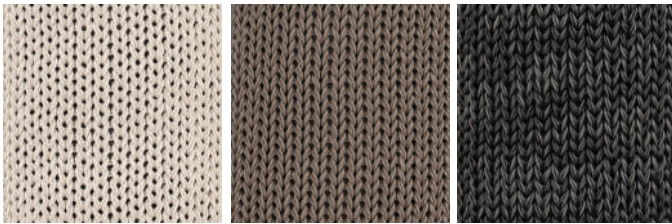
HONEY HF-021

CARBON HF-009

DARK GREY HF-010

LIGHT GREY 44219

100% PVC LOIRE STRAPS 45 MM. (3)



LIGHT-GREY 576

TAUPE GY32130

CARBON HF-009

Qualification: Water and stain repellent/resistant to UV Rays

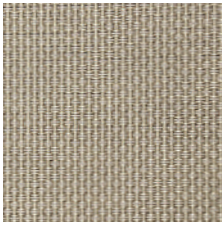
Tapir Works Studio
Summer Lasalle Avenue, Building A2, 1st Floor, Unit 213-214, Lasalle Road (Sukhumvit 105)
Bangna Tai, Bangna, Bangkok 10260 | T. +66 2000 5999 | E. Info@tapirworks.com

TAPIR WORKS

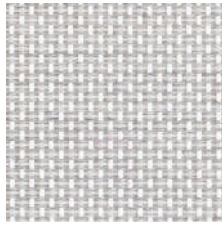


FINISHES KUN DESIGN & TAPIR WORKS RANGE

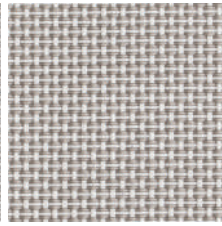
PVC & POLYPROPYLENE - CHINESE SLING (16)



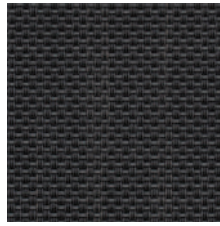
SAND YLSJ006



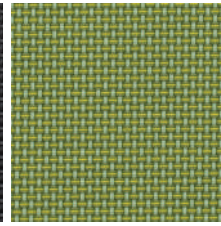
LIGHT GREY 50567



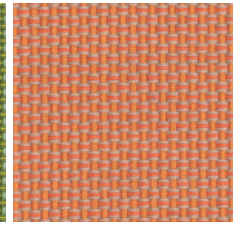
GREY T2166



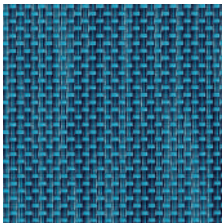
CARBON T2155



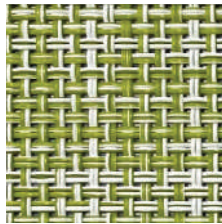
50734 GREEN



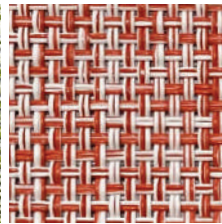
ORANGE 50723



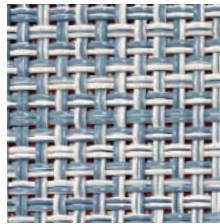
AQUAMARINE 50737



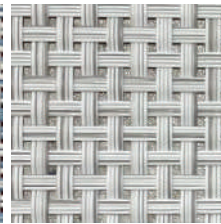
GREEN-WHITE T22252



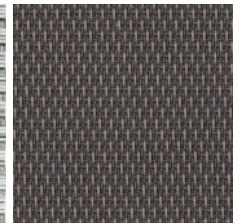
ORANGE-WHITE T22265



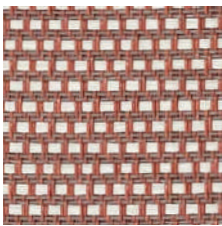
BLUE-WHITE 22216



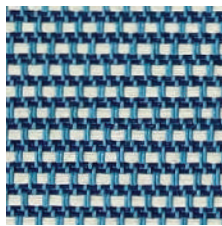
GREY-WHITE 44219



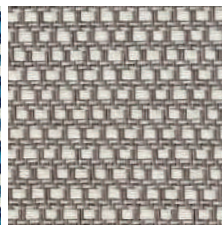
CAPPUCCINO 50065



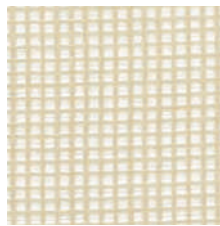
PINK MS008-DG



AQUAMARINE 81411



SAND 81412

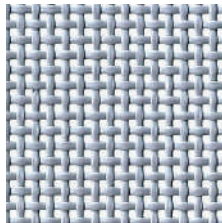


BEIGE 0155

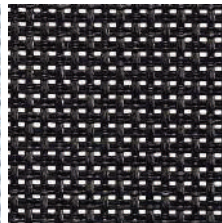
100% PVC - BATYLINE ISO SLING (5)



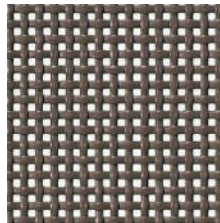
WHITE 7407-5001



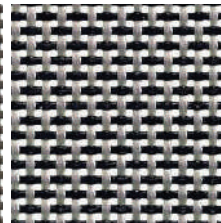
GREY 7407-5003



BLACK 7407-5005



TAUPE 7407-5015



METALLIC 7407-5261

Qualification: Extreme outdoor resistance with no sag, Reversible warp and weft and Very transparent and lightweight.

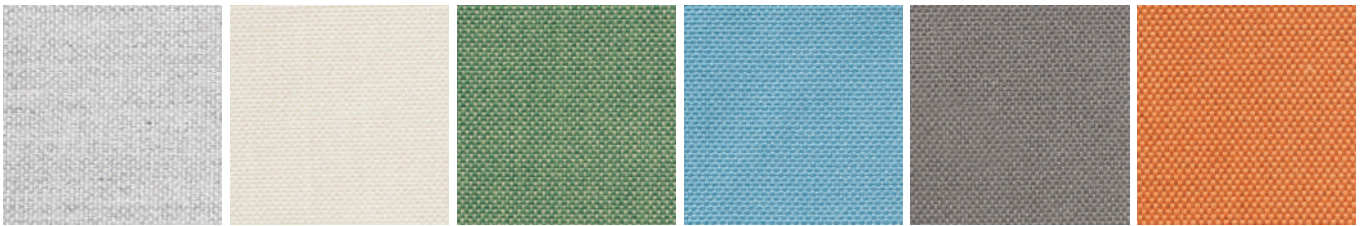
Tapir Works Studio
Summer Lasalle Avenue, Building A2, 1st Floor, Unit 213-214, Lasalle Road (Sukhumvit 105)
Bangna Tai, Bangna, Bangkok 10260 | T. +66 2000 5999 | E. Info@tapirworks.com

TAPIR WORKS



FINISHES KUN DESIGN & TAPIR WORKS RANGE

100% SOLUTION DYED ACRYLIC FABRIC - CHINESE FABRIC (7)



LIGHT GREY SEF-4002

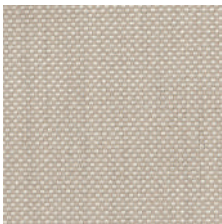
CANVAS SEF-4003

LEAF SEF-4004

AQUAMARINE SEF-4005

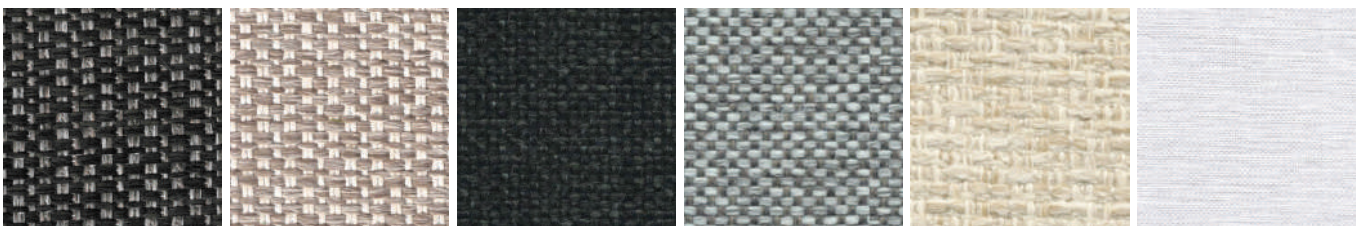
DARK GREY SEF-4006

ORANGE SEF-4007



SAND SEF-4008

100% OLEFIN - SUNPROOF CHINESE FABRIC (9)



FONTELINA 090

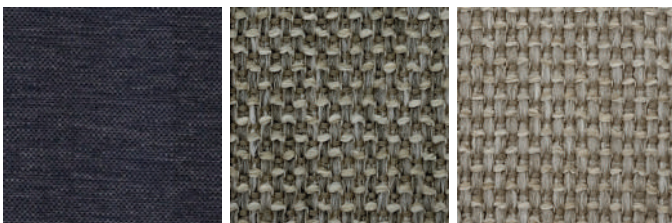
FONTELINA 180

CARBON SM070931

COPACABANA 161

WOOLACOMBE 140

SOUTHEND 130



SOUTHEND 093

VOLGA 163

VOLGA 164

Qualification: Water and stain repellent/resistant to UV Rays

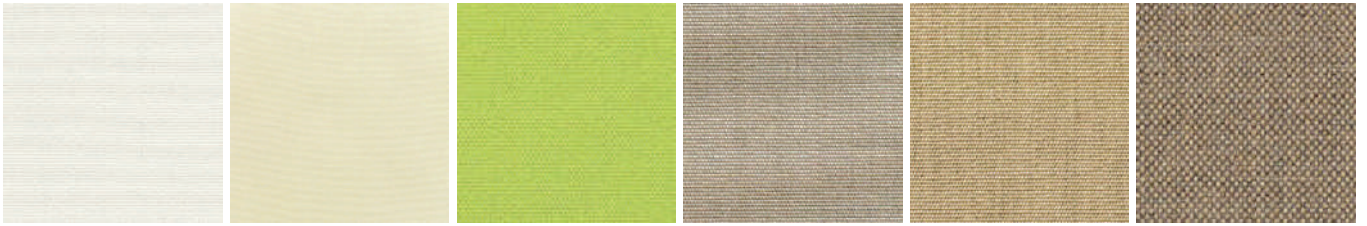
Tapir Works Studio
Summer Lasalle Avenue, Building A2, 1st Floor, Unit 213-214, Lasalle Road (Sukhumvit 105)
Bangna Tai, Bangna, Bangkok 10260 | T. +66 2000 5999 | E. Info@tapirworks.com

TAPIR WORKS



FINISHES KUN DESIGN & TAPIR WORKS RANGE

100% SOLUTION DYED ACRYLIC FABRIC - SUNBRELLA FABRIC (8)



NATURAL 5404-0000

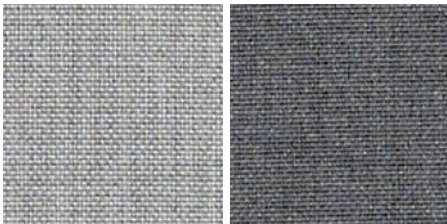
CANVAS 5453-0000

MACAW 5429-0000

TAUPE 5461-0000

BEIGE 5476-0000

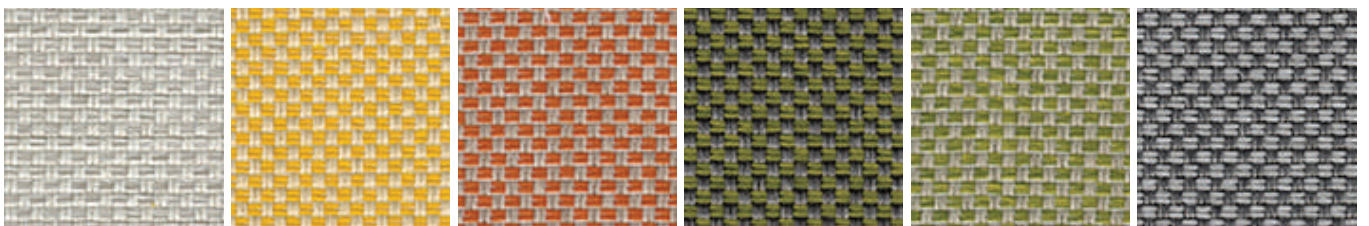
BROWN 10029-140



GREY 10022-140

CHARCOAL 10063-140

60% POLYPROPYLENE (PP) 40% POLYESTER (PES REC) - CREVIN SPANISH FABRIC (8)



VITA7 LION

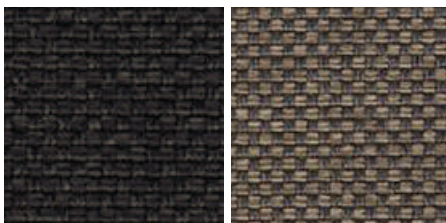
VITA19 YELLOW

VITA29 MANDARINA

VITA30 VERDE

VITA32 LIGHT GREEN

VITA51 GRIS



VITA53 MARENGO

VITA17 MOCCA

Qualification: Water and stain repellent/resistant to UV Rays

Tapir Works Studio
Summer Lasalle Avenue, Building A2, 1st Floor, Unit 213-214, Lasalle Road (Sukhumvit 105)
Bangna Tai, Bangna, Bangkok 10260 | T. +66 2000 5999 | E. Info@tapirworks.com

TAPIR WORKS



FINISHES KUN DESIGN & TAPIR WORKS RANGE

CERAMIC TOP THICKNESS 4.5 MM. (3)

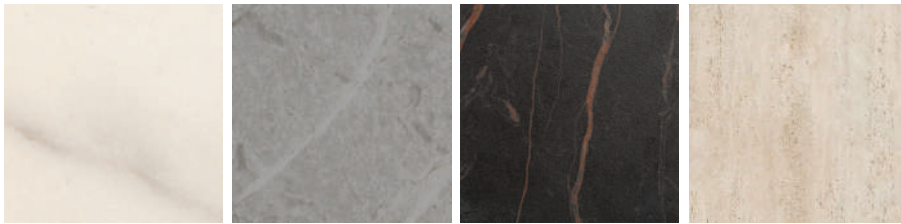


JK-11 LIGHT GREY

JK-6 DARK GREY

JK-4 BLACK

CERAMIC TOP THICKNESS 6 MM. (4)



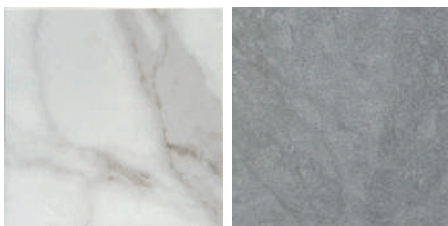
CALACATTA GOLD

JENNY GREY

SHARO BLUE

TRAVERTINO ROMAN

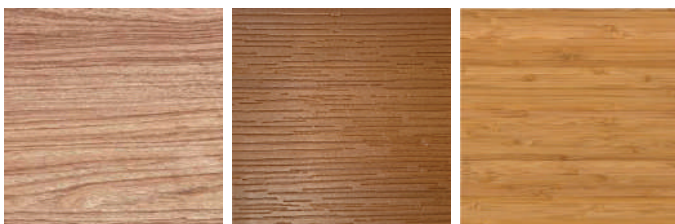
CERAMIC TOP THICKNESS 12 MM. (2)



ALPINE WHITE

BULGARIA GREY

WOODEN TOP (3)



TEAK

POLARWOOD

BAMBOO

Tapir Works Studio

Summer Lasalle Avenue, Building A2, 1st Floor, Unit 213-214, Lasalle Road (Sukhumvit 105)
Bangna Tai, Bangna, Bangkok 10260 | T. +66 2000 5999 | E. Info@tapirworks.com

TAPIR WORKS



FINISHES KUN DESIGN & TAPIR WORKS RANGE

HIGH PRESSURE LAMINATE (HPL) TOP (6)



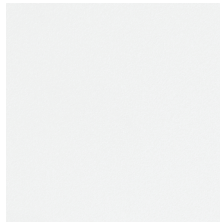
11186-65 LIGHT GREY



11191-65 GREY



F900-52 BLACK



F949-65 WHITE



10673-65 TEAK FINISH



1159N-65 OAK FINISH

Qualification: The most durable decorative surface material and is available with special performance properties including chemical, fire and wear resistance.

Tapir Works Studio
Summer Lasalle Avenue, Building A2, 1st Floor, Unit 213-214, Lasalle Road (Sukhumvit 105)
Bangna Tai, Bangna, Bangkok 10260 | T. +66 2000 5999 | E. Info@tapirworks.com

TAPIR WORKS