





**KUNDESIGN inspired by nature and life**

At KUN DESIGN, we create outdoor furniture and accessories that embody the contemporary era. Our products are developed from materials that retain the integrity of outdoor furniture without compromising the sophistication of indoor furnishing. Inspired by nature and life, our furniture can be placed anytime, anywhere, regardless of season and setting.

In pursuit of "Living with Design", we design furniture with an inclusive language that is unlimited by spatial boundaries, for users of all backgrounds to explore the many ways to integrate design with space. Joining the strengths of "Designed in China" and "Made in China", Kundesign hopes to bring products that are both modern and accessible to anybody who appreciates good furniture.

# CONTENTS

## OUTDOOR SOFA/DINING CHAIR

---



CLOGS  
08-13



BLOCK  
14-27



SHELL  
28-35



STRING  
36-57



BAGEL  
58-75



JUMBO  
76-89



PILLOW  
90-97



CHIC  
98-105



LOOP  
106-115



OVAL  
116-123



RUGBY  
124-135



NEST  
136-139



BANYAN TREE  
140-145



FLOW  
146-147



RIBBON  
148-149

## OUTDOOR DINING-TABLE/SIDE TABLE

---



MOONCAKE  
152-153



BALANCE  
154-161



BERGEN  
162-163



LOTUS  
164-173



PIPE BARCART  
174-175

## OUTDOOR FLOWERPOT

---



LOTUS PLANTER  
178-183



ROOT PLANTER  
184-185

## OUTDOOR LAMPS

---



LANTERN  
188-195

## OUTDOOR CABINET

---



LOTUS OUTDOOR  
FUNCTION ISLAND  
198-203



ISLAND  
204-209

## OUTDOOR PAVILION

---



PAVILION  
212-225

---

PRODUCT DETAILS

226-273

MATERIAL

274-282

**OUTDOOR SOFA/DINING CHAIR**

CLOGS  
08-13

BLOCK  
14-27

SHELL  
28-35

STRING  
36-57

BAGEL  
58-75

JUMBO  
76-89

PILLOW  
90-97

CHIC  
98-105

LOOP  
106-115

OVAL  
116-123

RUGBY  
124-135

NEST  
136-139

BANYAN TREE  
140-145

FLOW  
146-147

RIBBON  
148-149



# CLOGS new

Clog Series is to show the combination and application of diverse materials in outdoor furniture. Through the different textures, it brings a new visual and tactile experience. Inspired by ancient wooden shoe designs with Eastern and Western civilization and aesthetics, the whole series selects 'wood' as the base, combined with classic outdoor rope and fabrics, to create a natural, elegant feeling, also with a modern temperament.











# BLOCK new

Walking through various city blocks, enjoying the relaxation brought by the free exploration, the design concept of the Block Series just inspired by the 'city block'. The first impression of Block Sofa is thick, full, and comfortable.



14

15











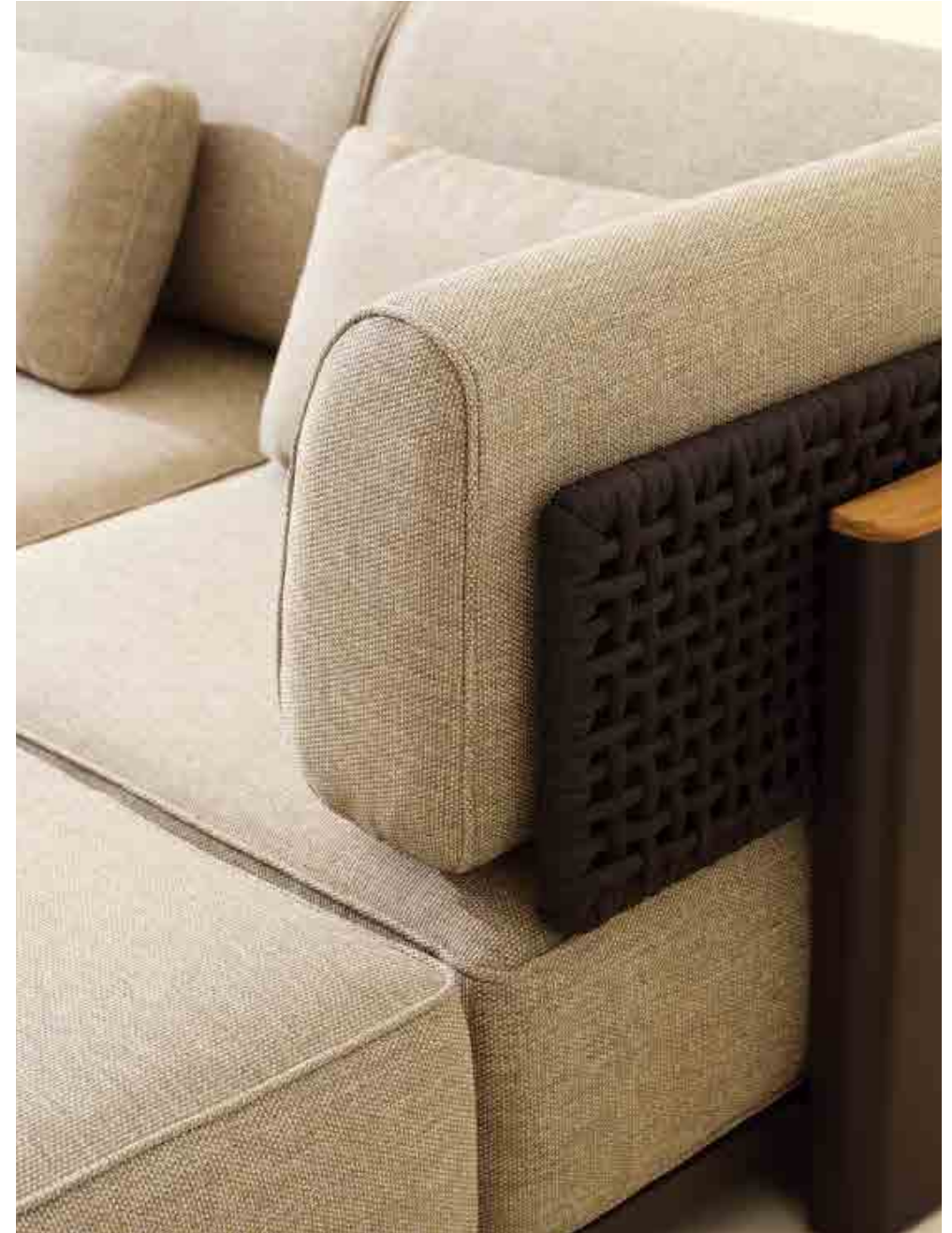
Block Sofa adopts a split structure that can ensure the stability of the module system. Based on the outdoor sponges, the seat cushion also adds a built-in spring structure to achieve better support and rebound effect.







22



23











# SHELL new

Shell Series is inspired by the 'shell' in nature. With a three-dimensional weaving style as the highlight, each piece of this series integrates several techniques and textures and emphasizes the beauty of diverse handicrafts.

28



29





# new lounge





Under the aesthetic of combining virtual and real, Shell Chair uses a simple aluminum frame with a fully woven backrest and seat to create a unique shape and comfortable experience.

32



33





34

Under the aesthetic of combining virtual and real, Shell Chair uses a simple aluminum frame with a fully woven backrest and seat to create a unique shape and comfortable experience.



35



# STRING

Simple and pure, from lines into a plane, this is the design concept of String series. Each piece in this collection is completed with a suspended structure and a hand-weaving technique to create a classic, timeless impression.

36

37

STRING-LOUNGE CHAIR  
(KC8608) Sandstone/Sand; Sailcloth Sahara

LANTERN-FLOOR LAMP(L)  
(KH8510) Black Mat





38

39

LOTUS-DINING TABLE  
(KT8602) Sandstone/Travertino Romano Top

STRING-DINING ARMCHAIR & LOUNGE ARMCHAIR  
(KC8608) Sandstone/ Sand

BALANCE-SIDE TABLE  
(KT8508) Black Mat;Teak Top

LANTERN-HAND LAMP  
(KH8510)Black Mat/Olive





40



41

STRING-LOUNGE CHAIR & FOOTSTOOL  
(KC8608) Sand/Sand

BALANCE-SIDE TABLE  
(KC8608) Olive Grey/Teak Top









44

45





STRING-DINING ARMCHAIR  
(KC8608) Black Mat/ Carbon

BAGEL-EXTENDABLE TABLE  
(KT8602) Black Mat/Sharo Blue Top



STRING-LOUNGE ARMCHAIR;(KC8608) Black Mat/ Carbon  
BALANCE-SIDE TABLE;(KT8508)Black Mat/Teak Top

48

49















54

55







# BAGEL

Bagel has inside and outside double design Which wrap your back comfortably with a fit body curve. Lounge chair, high-back lounge chair and dining chair are included in this series.

58



59



















**new**







**new**



BAGEL - LOUNGE ARMCHAIR & 2-SEATER SOFA  
(KC8605) Teaklook Alu/Sand;Cushion in Light Grey

BAGEL - HIGHBACK LOUNGE ARMCHAIR  
(KC8605) Teaklook Alu/Carbon;Cushion In Light Grey

BAGEL-COFFEE TABLE  
(KT8605) Teaklook Alu/Jenny Grey Top

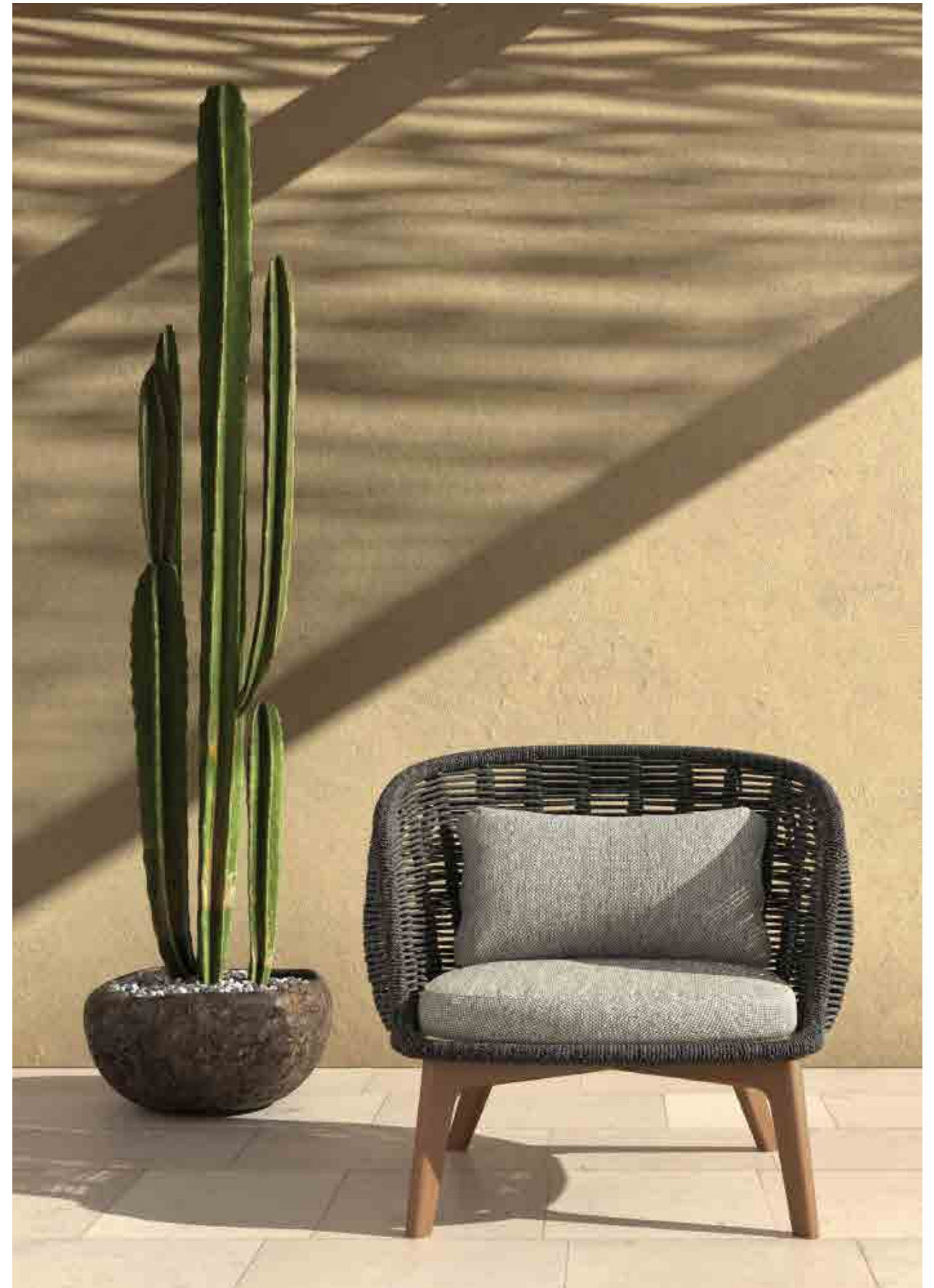
BAGEL-SIDE TABLE  
(KT8605) Teaklook Alu/Olive Grey





BAGEL -HIGHBACK LOUNGE ARMCHAIR & FOOTSTOOL  
(KC8605) Teaklook Alu/Carbon;Cushion In Light Grey

BAGEL-SIDE TABLE  
(KT8605) Teaklook Alu/Olive Grey



BAGEL -LOUNGE ARMCHAIR  
(KC8605) Teaklook Alu/Carbon;Cushion In Sunproof-161





74

75

BAGEL -BAR CHAIR  
(KC8605) Teaklook Alu/Carbon;Cushion In Dark Grey



# JUMBO

Jumbo series represents an unhurried contemporary attitude towards leisure life. It looks like a jumbo item with "elephant ears" from a distance.

76

77

JUMBO-LOUNGE ARMCHAIR & 3-SEATER SOFA  
(KC8607) Teaklook Alu/Camel,Fontelina 180

JUMBO-HIGHBACK LOUNGE ARMCHAIR  
(KC8607) Teaklook Alu/Nacarar,Vita 61

LANTERN-FLOOR LAMP(L)  
(KH8510) Red Ocher

BAGEL-SIDE TABLE  
(KC8605) Teaklook Alu/Terra Cotta/Olive Grey

BAGEL-COFFEE TABLE  
(KC8605) Teaklook Alu/Olive Grey/Travertino Romano Top





JUMBO-LOUNGE ARMCHAIR  
(KC8607) Teaklook Alu/Camel;Fontelina 180

LANTERN-FLOOR LAMP(L)  
(KH8510) Red Ocher





Jumbo Lounge Armchair is wide with a handwoven backrest and wings, expressing a sense of embrace. The color of the wood and the combination of weaving make it very natural and harmonious.

JUMBO-DINING ARMCHAIR  
(KC8607) Teaklook Alu/Sand; Cushion in Light Grey

BAGEL-EXTENDABLE TABLE  
(KT8602) Teaklook Alu/Travertino Romano Top











84

85

JUMBO-LOUNGE ARMCHAIR & SOFA & DINING ARMCHAIR  
(KC8607) Teaklook Alu/Sand; Cushion in Light Grey

BAGEL-SIDE TABLE  
(KT8605) Teaklook Alu/Olive Grey TOP

BAGEL-COFFEE TABLE  
(KT8605) Teaklook Alu/Jenny Grey Top

BAGEL-EXTENDABLE TABLE  
(KT8602) Olive Grey/Jenny Grey Top

LANTERN-FLOOR LAMP(XL)  
(KH8510) Olive









JUMBO-DINING ARMCHAIR  
(KC8607) Teaklook Alu/Sand; Cushion in Light Grey

BAGEL-EXTENDABLE TABLE  
(KT8602) Olive Grey/Jenny Grey Top



# PILLOW

Pillow Sofa takes aluminum frame and teak board as the support part. The soft cushions on the top can be removed for easy cleaning and storage. In order to ensure the comfort and three-dimensional sense of the cushions, each cushion is equipped with a stainless-steel frame inside which can prevent deformation.

STRING-LOUNGE CHAIR & FOOTSTOOL  
(KC8608) Black Mat/Carbon

PILLOW-SIDE TABLE & COFFEE TABLE  
(KT8804) Black Mat/Teaklook Top

LANTERN-FLOOR LAMP(L)  
(KH8510) Black Mat

PILLOW-CENTER MODULE & CHAISE LOUNGE LEFT ARM MODULE & 2-SEATER SOFA RIGHT ARM MODULE  
(KC8804) Black Mat/Teaklook Alu; Light Grey





92

92

STRING-LOUNGE CHAIR & FOOTSTOOL  
(KC8608) Black Mat/Carbon

PILLOW-SIDE TABLE & COFFEE TABLE  
(KT8804) Black Mat/Teaklook Top

LANTERN-FLOOR LAMP(L)  
(KH8510) Black Mat

PILLOW-CENTER MODULE & CHAISE LOUNGE LEFT ARM MODULE & 2-SEATER SOFA RIGHT ARM MODULE  
(KC8804) Black Mat/Teaklook Alu; Light Grey





PILLOW-CENTER MODULE & CORNER MODULE & 2-SEATER SOFA RIGHT ARM MODULE  
(KC8804) Sandstone/Teaklook Alu; Fontelina 180







PILLOW -SUN LOUNGER  
 (KS8804)White Mat /Light Grey/Teaklook

LOTUS-PLANTER  
 (KH8602) Juniper Green/Silver Grey/Teaklook

BALANCE-SIDE TABLE  
 (KT8508) Olive/Teak Top



# CHIC

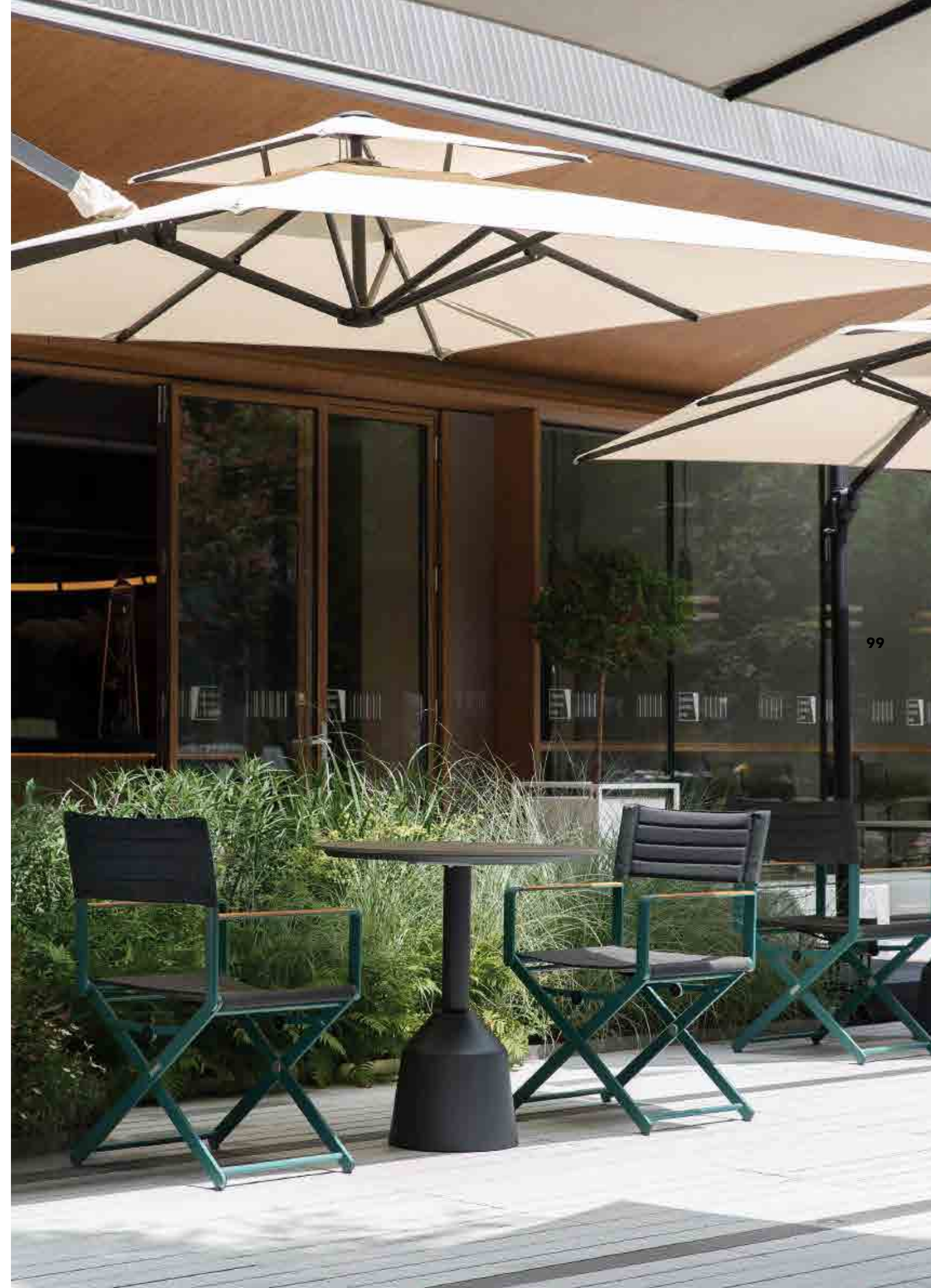
The birth of Chic Folding Chair is a tribute to the classic 'Director's Chair' in the 20th century. Its design inspiration can be traced back to the ancient Roman period.



98

CHIC - FOLDING CHAIR  
(AC5746) Dark Green / Teak / Carbon

BALANCE - DINING TABLE  
(KT8602) Black Mat / Light Grey Top



99





CHIC - FOLDING CHAIR  
(AC5746)Dark Green /Teak/Carbon

BALANCE - DINING TABLE  
(KT8602)Black Mat /Light Grey Top







Through modern technology, Chic Folding Chair has simplified and optimized the structure of the chair to the utmost extent. Each component is casted with fine details. Its sturdy chair body is composed of metal frame and hand-made three-dimensional sewing fabric, with the built-in quick-drying sponge on the back and seat surface, providing both aesthetic feeling and comfort.

104

105



# LOOP

The LOOP chair was originally designed to express continuous lines. The entire chair is woven with a single continuous rope.



106

LOOP-DINING ARMCHAIR  
(KC8604) Juniper Green/ Honey

BERGEN-DINING TABLE  
(AM9003) Juniper Green/ Teak Top



107









110



111











# OVAL

OVAL chair is our contemporary and three-dimensional take of the traditional board back chair. The edge stamping craft allows it to have a large and three-dimensional backrest - comfortable and compact.

116

117

OVAL-DINING ARMCHAIR  
(KC8507) Sandstone/ Teaklook Alu

BAGEL-EXTENDABLE TABLE  
(KT8602) Teaklook Alu/ Travertino Romano Top





118

119

OVAL-DINING ARMCHAIR  
(KC8507) Olive/ Teaklook Alu

LANTERN-FLOOR LAMP(L)  
(KH8510) Olive





OVAL-DINING ARMCHAIR  
(KC8507) Red Ocher/ Teaklook Alu

BALANCE-DINING TABLE  
(KM8602) Sand; Teak Top





LOTUS-DINING TABLE  
(KT8602) Juniper Green/Silver Grey/Jenny Grey Top

PIPE BAR CART  
(KT8503) Olive Grey/Teaklook

OVAL-DINING ARMCHAIR  
(KC8507) Olive/Teaklook Alu



# RUGBY

Rugby series expresses a blend of metal, wood and rope elements which is inspired by the sport of Rugby. The first impression of this series is steadfast, steady. And the elegant detail gives more levels of design expression.

124

125

RUGBY-CENTER MODULE & LOUNGE ARMCHAIR & 2-SEATER SOFA LEFT ARM MODULE  
(KC8603) Black Mat/Dark Grey/Plastic Wood; Cushion in Dark Grey

RUGBY-COFFEE TABLE & END TABLE  
(KT8603) Black Mat/Plastic Wood Top

LANTERN-FLOOR LAMP(XL)  
(KH8510) Olive

LOTUS-PLANTER  
(KH8602) Olive/ Anthracite





126

127

**RUGBY-2-SEATER SOFA**  
(KC8603) Black Mat/Dark Grey/Plastic Wood; Cushion in Dark Grey

**RUGBY-COFFEE TABLE**  
(KT8603) Black Mat/Plastic Wood Top

**RUGBY-LOUNGE ARMCHAIR**  
(KC8603) Black Mat/Dark Grey/Plastic Wood; Cushion in Dark Grey

**LOTUS-PLANTER**  
(KH8602) Olive/ Anthracite





128

129

RUGBY-CENTER MODULE & LOUNGE ARMCHAIR & CORNER MODULE & FOOTSTOOL  
(KC8603) Black Mat/Dark Grey/Plastic Wood; Cushion in Dark Grey

RUGBY-COFFEE TABLE & END TABLE  
(KT8603) Black Mat/Plastic Wood Top

RUGBY-2-SEATER SOFA LEFT ARM MODULE & RIGHT ARM MODULE  
(KC8603) Black Mat/Dark Grey/Plastic Wood; Cushion in Dark Grey

LANTERN-FLOOR LAMP(XL)  
(KH8510) Olive

LOTUS-PLANTER  
(KH8602) Olive/ Anthracite





130

131

RUGBY-2-SEATER SOFA & LOUNGE ARMCHAIR  
(KC8603) White Mat/ Light Grey/Plastic Wood; Cushion in Mandarina Vita-32

RUGBY-LOUNGE HEIGHT COFFEE TABLE  
(KT8603) White Mat/Plastic Wood Top

PILLOW -SUN LOUNGER  
(KS8804)White Mat /Cushion in Mandarina Vita-30

LOTUS-PLANTER  
(KH8602) Black Mat

BALANCE-SIDE TABLE  
(KT8508) Black Mat/ Teak

PIPE-BAR CART  
(KT8503) Black Mat





132

RUGBY-2-SEATER SOFA & LOUNGE ARMCHAIR  
(KC8603) White Mat/ Light Grey/Plastic Wood; Cushion in Mandarinita Vita-32

PILLOW - SUN LOUNGER  
(KS8804) White Mat /Cushion in Mandarinita Vita-30



133





RUGBY-LOUNGE ARMCHAIR & SOFA  
(KC8603) White Mat/Sand/Plastic Wood; Cushion in Sunberlla5476

RUGBY-LOUNGE HEIGHT COFFEE TABLE  
(KT8603) White Mat/Plastic Wood Top

LOTUS-PLANTER  
(KH8602) Juniper Green/Teaklook

PIPE BAR CART  
(KT8503) Olive Grey



# NEST

The geometric weavings of NEST high-back lounge chair mimic the appearance of rattan, creating a partition around the body for privacy. Crafted in weather-resistant ropes and quick-dry cushion, this chair is designed to be used both indoors and outdoors.



136



137

NEST-HIGHBACK LOUNGE ARMCHAIR & LOUNGE ARMCHAIR  
(KC8602)Olive/Green; Cushion in Sand

LOTUS-SIDE TABLE  
(KT8602) Silver Grey/Olive; Teak Top



Nest Sofa builds a round and fruity shape, and the waving design of its backrest shows a sense of order and geometric beauty, which changed the impression of traditional outdoor furniture. Nest Sofa is equipped with a tray on its armrest, the seat and backrest are made of special quick-dry and UV-resistant fabric with excellent environmental adaptability.



NEST-HIGHBACK LOUNGE ARMCHAIR & LOUNGE ARMCHAIR  
(KC8602)Olive/Green; Cushion in Sand

LOTUS-SIDE TABLE  
(KT8602)Silver Grey/Teak Top

LOTUS-CITY PLANTER  
(KH8602)Olive Grey



# BANYAN TREE

With a curvature that conforms to the natural arch of the human spine, the back of the Banyan Tree is designed to put the body at ease. The interwoven strands are reminiscent of tree vines to create a distinctive look that can easily complement its surroundings.



140

141

BANYAN TREE-LOUNGE ARMCHAIR  
(KC8601) White Mat/Sand;Cushion in Light Grey

PILLOW -2-SEATER SOFA RIGHT ARM MODULE & 2-SEATER SOFA LEFT ARM MODULE  
(KC8804) White Mat /Teaklook/Cushion in Light Grey

PILLOW -CORNER MODULE  
(KC8804) White Mat /Teaklook/Cushion in Light Grey

LOTUS-COFFEE TABLE  
(KT8602) Juniper Green/Jenny Grey Top

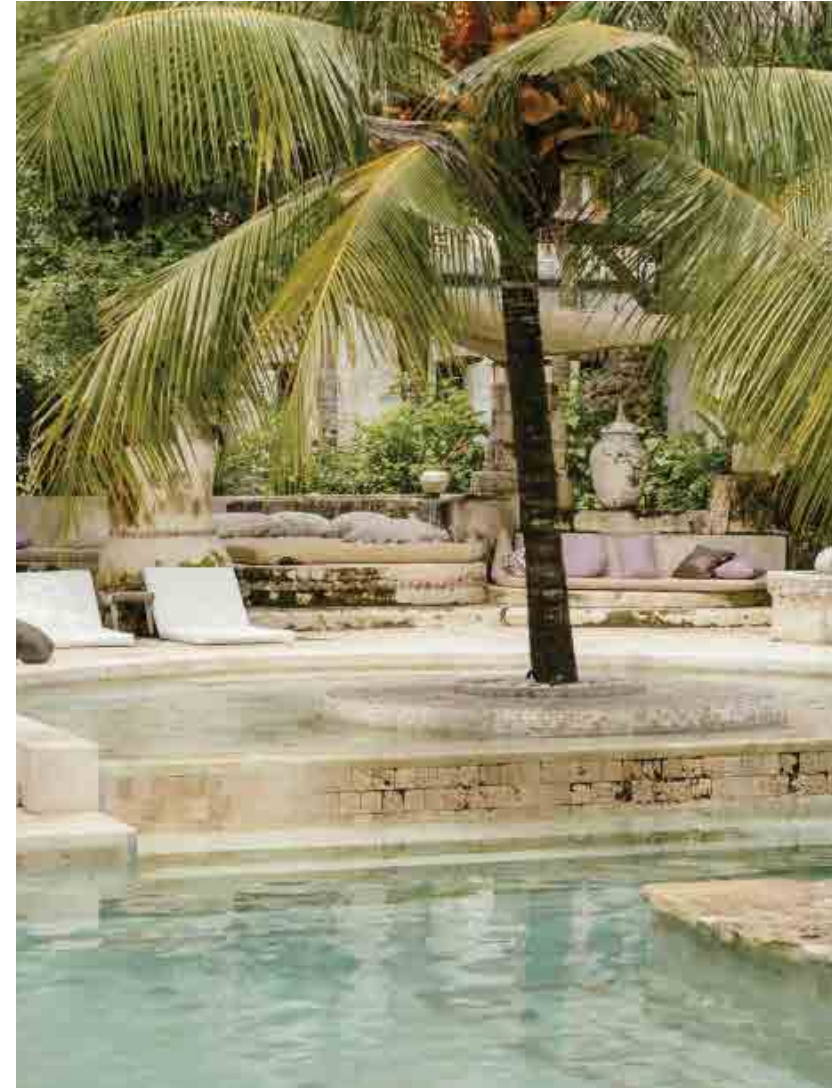
LOTUS-SIDE TABLE  
(KT8602) Silver Grey/Teak Top





**BANYAN TREE-ROCKING ARMCHAIR**  
 (KC8601) White Mat/Sand/Teaklook;Cushion in Light Grey

**BAGEL-SIDE TABLE**  
 (KT8605) Olive Grey/Teaklook







**BANYAN TREE-ROCKING ARMCHAIR & FOOTSTOOL**  
(KC8601) Anthracite/Green/Teaklook; Cushion in Dark Grey

**BALANCE-SIDE TABLE**  
(Kt8508) Olive/Teak Top

**LANTERN-FLOOR LAMP(L)**  
(KH8510) Black Mat



# FLOW

Flow Swing is designed for leisure time to make the outdoor life full of fun. Its inspiration comes from the magic carpet in the myth story, trying to capture the happy time of childlike innocence through a special form. The swing is light, stable, and in a dynamic style. The seat has a slight arc shape, stretched with waterproof PVC fabric, can be used together with a soft cushion.



146

FLOW  
(KP8704)Dark Green/Magma/Teaklook Alu

BALANCE-SIDE TABLE  
(KT8508)Black Mat/Teak Top



FLOW ; (KP8704)Dark Green  
RIBBONE-STOOL ;(KC8806) Sunproof-161  
BERGENE-SIDE TABLE; (AT0608)Black Mat/Snow White

22

147



# RIBBON

Ribbon Stool is an abstraction of natural things and simple manual-era life. It conveys a relaxed and beautiful emotion. Its round shape looks like vigorous seeds, leaves, plump succulent plants and grains. The banding design represents the easy 'hand tying' actions, such as bundling hay, tying a bouquet or a gift.



148



149

RIBBONE-STOOL; (KC8806)Vita30/Sunproof-161  
BERGENE-SIDE TABLE; (AT0608)Black Mat/Snow White



150

## OUTDOOR DINING-TABLE/SIDE TABLE

151

MOONCAKE  
152-153

BALANCE  
154-161

BERGEN  
162-163

LOTUS  
164-173

PIPE BARCART  
174-175

---



# MOONCAKE

Inspired by joyful holiday moments in life, the Mooncake stool is shaped like a traditional snack in the Mid-Autumn Festival, with continuous arc design and bright colors, presenting a light and cheerful playfulness.



152



153

MOONCAKE-STOOL  
(KT8602)Olive/Orange



# BALANCE

Be balanced, stable and back to the original state of things, which is the initial design concept of this Balance series. The word "Balance" is perfect to express the understanding of the scale, function and aesthetics of a table.

154

CHIC -FOLDING CHAIR  
(AC5746)Dark Green /Carbon

BALANCE -DINING TABLE  
(KT8602)Black Mat /Light Grey Top

1402





156

157

WINGS-SWIVEL CHAIR  
(AC5879) Sand/ Sand; Fontelina 180

WINGS-SWIVEL CHAIR  
(KT8602) Red Ocher/ Red Ocher; Orange

BALANCE-DINING TABLE  
(KM8602) Sand; Travertino Romano Top



The lines on the weights are designed with respect to the golden ratio, thus the top and bottom components are firm and secure. The series of weights also have symmetrical upper and lower endtables, with the upper one removable to serve dual functions of storage and flower arrangement.

158



159



BALANCE-DINING TABLE  
(KT8602) White Mat/Teak Top

BALANCE- PLANTER  
(KT8508) Olive Grey





BALANCE-SIDE TABLE  
(KT8508)Olive/Black Mat;Teak Top





# BERGEN

Bergen table series includes side table, dining table, bar table etc., which is composed by the simple geometric elements and pillars. The radians and details express the smooth rounded characteristics.



RIBBONE-STOOL  
(KC8806)Vita30/Sunproof-161

BERGEN-SIDE TABLE  
(AT0608)Black Mat/Snow White Top



OVAL-DINING ARMCHAIR  
(KC8507)Yellow/Olive

BERGEN-SIDE TABLE  
(AT0608)Yellow/Olive; Snow White Top



# LOTUS

Select from a range of nature-inspired colours that will allow the series, which includes both tables and vases, to easily integrate into various indoor and outdoor décor.

164



165

LOTUS-DINING TABLE  
(KT8602) Sandstone/Travertino Romano Top

STRING-DINING ARMCHAIR & LOUNGE ARMCHAIR  
(KC8608) Sandstone/ Sand

BALANCE-SIDE TABLE  
(KT8508) Black Mat;Teak Top

LANTERN-HAND LAMP  
(KH8510)Black Mat/Olive



The design inspiration of Lotus series comes from the extraction and expression of the shape of petals. The petal design of its central pillar bestows the Lotus with understated elegance.



166



167

LOTUS-COFFEE TABLE  
(KT8602) Juniper Green; Jenny Grey

LOTUS-SIDE TABLE  
(KT8602) Silver Grey; Teak Top





168

169

LOTUS-SIDE TABLE  
(KT8602) Juniper Green/Silver Grey/Jenny Grey Top

BANYAN TREE-DINING ARMCHAIR  
(KC8601) White Mat/Sand;Cushion in Light Grey



LANTERN-HAND LAMP-(KH8510) PD-3445  
WINGS-ROPE LAMP-(AH2019) Sand/ Sand  
LOTUS-COFFEE TABLE-(KT8602) Sand/ HPL Top  
LOTUS-COFFEE TABLE-(KT8602) Sand/ Travertino Romano Top

170

171

WINGS-2-SEATER SOFA LEFT ARM MODULE & CHAISE LOUNGE RIGHT AM MODULE & CENTER MODULE  
(AC5879) Sand/Sand/Teaklook Alu; VOLGA C/163

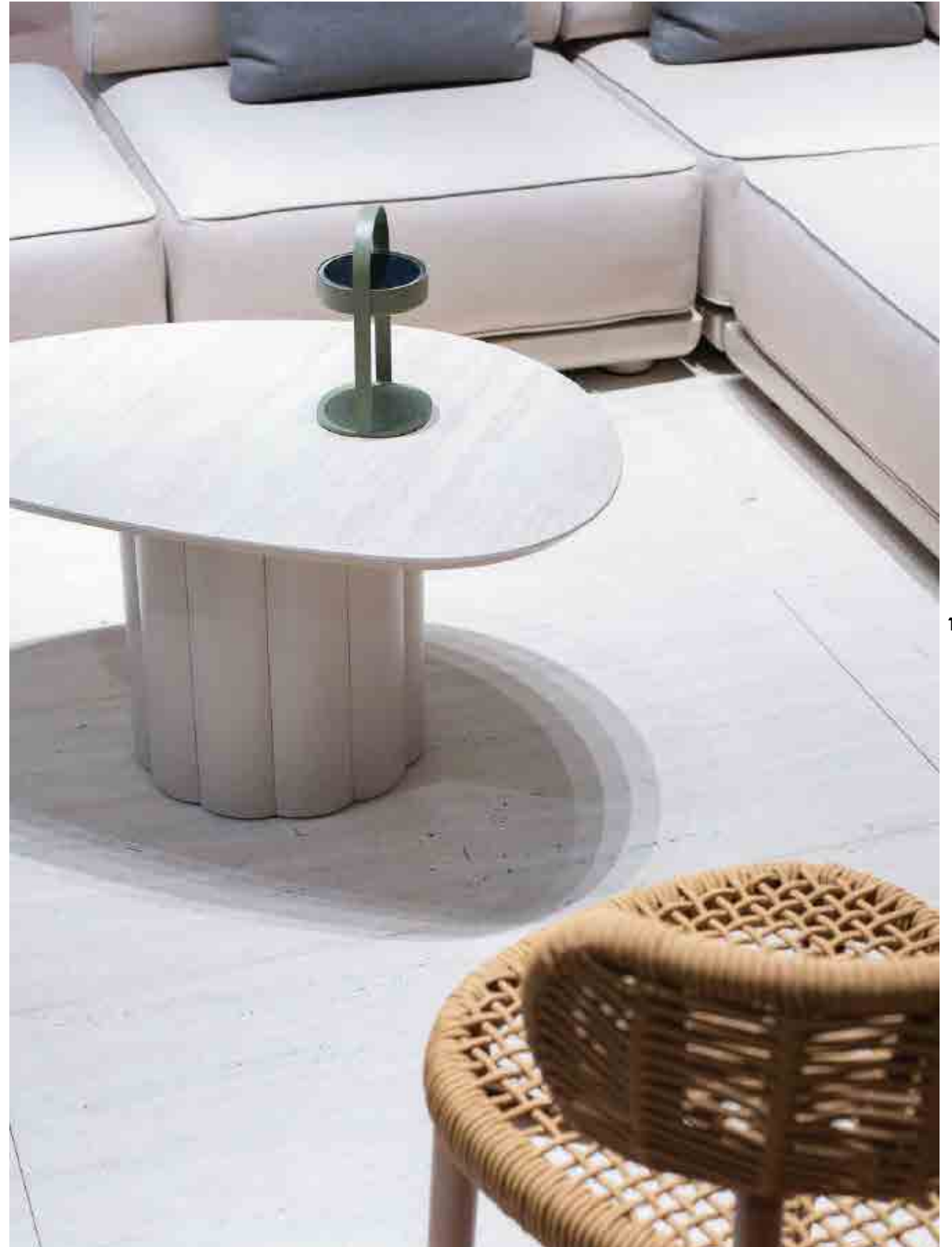


LANTERN-HAND LAMP-(KH8510) PD-3445  
WINGS-ROPE LAMP-(AH2019) Sand/ Sand  
LOTUS-COFFEE TABLE-(KT8602) Sand/ HPL Top  
LOTUS-COFFEE TABLE-(KT8602) Sand/ Travertino Romano Top



172

WINGS-2-SEATER SOFA LEFT ARM MODULE & CHAISE LOUNGE RIGHT AM MODULE & CENTER MODULE  
(AC5879) Sand/Sand/Teaklook Alu; VOLGA C/163



173

SHELL-DINING ARMCHAIR  
(KC8610)Teaklook Alu/ Camel

LOTUS-COFFEE TABLE  
(KT8602) Sand/ Travertino Romano Top

LANTERN-HAND LAMP  
(KH8510) Olive



# PIPE BARCART

Derived from the PIPE double deck coffee table, the bar cart has been designed in full consideration of its usage and movement. It has a stable structure that is easily maneuvered around. Minimalistic and modern, the design of the PIPE bar cart can be well integrated into the outdoor environment

174

175



PIPE BAR CART  
(KT8503) Olive Grey/Teaklook



176

# OUTDOOR FLOWERPOT

177

LOTUS PLANTER  
178-183

ROOT PLANTER  
184-185

---



# LOTUS PLANTER

The Lotus planter continues to express the family character of the series, with the central column shaped like a petal and a continuous combination of one petal to another.



178

LOTUS-PLANTER  
(KH8602) Olive/Anthracite/ Olive Grey/Orange/Juniper Green/Silver Grey



179



The overall flowerpot upper matches the rhythmic base of the petals below, achieving a more aesthetically pleasing ratio.

180



181

LOTUS-PLANTER  
(KH8602) Olive/ Anthracite/ Olive Grey/Orange/Juniper Green

LOTUS-SIDE TABLE  
(KT8602) Silver Grey/Teak Top





LOTUS-PLANTER  
(KH8602) Olive/ Anthracite/ Olive Grey



This series is more suitable for home use with four reasonable sizes to meet your different plant needs.



ROOT-PLANTER  
(KH8513) Olive/ Black Mat/Taupe

184

185

# ROOT PLANTER





186

## OUTDOOR LAMPS

187

LANTERN  
188-195

---



# LANTERN

The inspiration of Lantern series comes from the combination of oriental aesthetics and modern design.



188

LANTERN-HAND LAMP  
(KH8510) Black Mat/White Mat



189





190



191

LANTERN-FLOOR LAMP(L)  
(KH8510) Olive

WINGS- 3-SEATER SOFA  
(AC5879) Sand/Sand; Woolacombe 140

LANTERN-FLOOR LAMP(XL)  
(KH8510) Black Mat



For this hand lamp, it adds a small round bottom, which you can display plant, flower, decoration pieces to build the cozy atmosphere, delightfully fresh nature.

192

193

LANTERN-HAND LAMP  
(KH8510) Orange/Olive



The light source uses solar energy + touch-control technology for flexible using and energy saving in practical daily life. For this floor lamp, you can choose upright stand or offset stand.



194

LANTERN-HAND LAMP  
(KH8510) Orange/Olive



195

ROOT PLANTER-PLANTER  
(KH8510) Black Mat

LANTERN-FLOOR LAMP(XL)  
(KH8510) Orange

MASTER-LOUNGE ARMCHAIR  
(AC5881) Red Ocher; Light Grey



196

# OUTDOOR CABINET

197

LOTUS OUTDOOR  
FUNCTION ISLAND  
198-203

ISLAND  
204-209

---



# LOTUS OUTDOOR FUNCTION ISLAND



LOOP-BAR CHAIR  
(KC8604) Olive/ Honey



LOTUS OUTDOOR FUNCTION ISLAND  
(AKC0100) Olive/ Calacata Gold Top





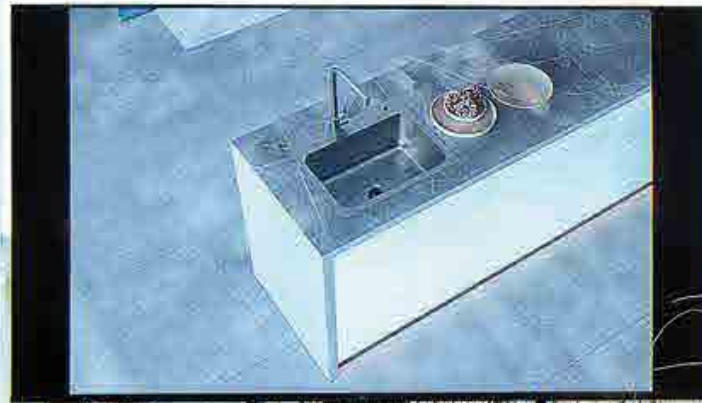
LOOP-BAR CHAIR  
(KC8604) Olive/ Honey

LOTUS OUTDOOR FUNCTION ISLAND  
(AKC0100) Olive/ Calacatta Gold Top





# design by nature



202

203

LOTUS OUTDOOR FUNCTION ISLAND  
(AKC0040) Sandstone/ White Travertino Roman Top

LANTERN-HAND LAMP  
(KH8510) Orange

LOTUS OUTDOOR FUNCTION ISLAND  
(AKE0070) Black Mat/ Plastic Wood Armani Grey Top



# ISLAND

204

205

ISLAND  
(AKA0100) Olive Grey/ Armani Grey



206



207



ISLAND  
(AKA0100) Olive Grey/ Armani Grey



ISLAND  
(AKA0100) Olive Grey/ Armani Grey



208

209





210

# OUTDOOR PAVILION

211

PAVILION  
212-225

---



# PAVILION

Pavilion is designed to naturally extend indoor life to the outdoors with an architectural style. It is a 'continuation of the house', emphasizing a non-temporality, and encouraging normalization of enjoying the outdoors. The entire pavilion is based on a standard module structure with a narrow eaves design.



212

213

BAGEL-COFFEE TABLE  
(KT8605) Teaklook Alu/Jenny Grey Top

CHIC-FOLDING CHAIR  
(AC5746) Dark Green/Teak/Carbon

BALANCE-DINING TABLE  
(KT8602) Black Mat/Jenny Grey Top

PAVILION  
(AP6500) Black Mat

JUMBO-LOUNGE ARMCHAIR & 2-SEATER SOFA  
(KC8607) Teaklook Alu/Dark Grey; Cushion in Fontelina 180

RIBBON-STOOL  
(KC8806) Sunproof-161



214



PAVILION  
(AP6301) Dark Green/Hpl/Teaklook Alu

PAVILION  
(AKG0010) Dark Green/ Hpl Top

ISLAND  
(AKA0100) Olive Grey/ Armani Grey

215



SHELL-BAR CHAIR  
(KC8610) Black Mat/ Carbon

LANTERN-HAND LAMP  
(KH8510) Olive/Curcum/Magma





STRING-DINING ARMCHAIR & LOUNGE ARMCHAIR  
(KC8608) Black Mat/ Carbon

LOTUS OUTDOOR FUNCTION ISLAND  
(AKC0300) Olive/ Calacata Gold Top

LOOP-BAR CHAIR  
(KC8604) Olive/ Honey

PAVILION  
(AP6500)OLIVE

BALANCE-SIDE TABLE  
(KT8508)Black Mat/Teak Top

BAGEL-EXTENDABLE TABLE  
(KT8602) Olive/ Calacata Gold Top



PAVILION(AP6500) Nutmeg/ Teaklook Alu/HPL  
 WINGS LAMPS-ROPE LAMP(AC5879) Sand/ Sand  
 WINGS-LOUNGE ARMCHAIR(AC5879) Red Ocher/ Red Ocher; Orange  
 CUBA-END TABLE(AT5880) Sand/ Plastic Wood/ Travertino Romano Top

WINGS-2-SEATER SOFA RIGHT ARM MODULE & CENTER MODULE & CHAISE LOUNGE LEFT ARM MODULE  
 (5879) Sand/ Teaklook Alu/Sand; Woolacombe 140



220

221

PAVILION  
(AP6500)Olive

LOTUS-DINING TABLE  
(KT8602) Juniper Green/Jenny Grey Top

LOTUS-PLANTER  
(KH8602) Juniper Green/Teaklook

PILLOW- COFFEE TABLE  
(KT8804)White Mat /Teaklook

PILLOW-CENTER MODULE & 2-SEATER SOFA RIGHT ARM MODULE  
(KC8804)White Mat /Teaklook/Cushion in Fontelina180

PILLOW-CHAISE LOUNGE LEFT ARM MODULE  
(KS8804)White Mat /Teaklook/Cushion in Fontelina180



PAVILION  
(AP6501) Sand/Hpl/Teaklook Alu

PAVILION  
(AKG0020) Olive Grey/ Armani Grey

OVAL-BAR CHAIR  
(KC8507) Black Mat/ Plastic Wood

LOOP-BAR CHAIR  
(KC8604) Terra Cotta/ Honey





224

225

PAVILION  
(AP6500) Black Mat/HPL/Teaklook

CORE-ROPE LAMP(S) & ROPE LAMP(L)  
(AH2018) Black Mat/ Carbon









# CLOGS

Clog Series is to show the combination and application of diverse materials in outdoor furniture. Through the different textures, it brings a new visual and tactile experience. Inspired by ancient wooden shoe designs with Eastern and Western civilization and aesthetics, the whole series selects 'wood' as the base, combined with classic outdoor rope and fabrics, to create a natural, elegant feeling, also with a modern temperament.

FRAME:



Sandstone  
(48381H)



Olive  
(1219626)



wood

ROPE:



Sand  
(HF-006)

FABRIC:



Vita 32/JALOUSIE-140 180

Dining Chair  
KC8611N01ROP  
W62xD69.5xH88.5 cm  
Aluminum/PVC rope/fabric



Frame : wood  
Rope : Sand  
Fabric : Vita 32/JALOUSIE-140 180

Lounge chair  
KC8611N07ROP  
W87xD93xH88.5 cm  
Aluminum/PVC rope/fabric



Frame : wood  
Rope : Sand  
Fabric : Vita 32/JALOUSIE-140 180

Coffee Table  
KT8611N63ALU  
W106xD53xH33 cm  
W106xD53xH28 cm  
Aluminum



Frame : Sandstone



Frame : Olive

Coffee Table  
KT8611N63ALU  
W90xD53xH33 cm  
W90xD53xH28 cm  
Aluminum



Frame : Sandstone



Frame : Olive



# BLOCK

Walking through various city blocks, enjoying the relaxation brought by the free exploration, the design concept of the Block Series just inspired by the 'city block'. The first impression of Block Sofa is thick, full, and comfortable. It can bring complete relaxation for the body and mind, like a long-awaited urban roaming, which is desirable. It uses a square block as the basic element to extend a single position, corner position, arc module, etc., which can match a flexible seating scene. Block Sofa adopts a split structure that can ensure the stability of the module system. Based on the outdoor sponges, the seat cushion also adds a built-in spring structure to achieve better support and rebound effect. While the T-shaped backrest with handwoven elements can be installed on any three sides of the base, and the special fixed way at the bottom makes it stand directly on the ground, like road signs and street guideposts, to express the characteristics of different cities: dark red and wooden color remind the memory of Beijing, light yellow and beige represent the romance of Paris. In addition, the exquisite teak decoration, woven pattern, and functional damp-proof foot emphasize the sense of integrity of this collection.

Corner Module  
KC8609N13ROP  
W92xD92xH73 cm  
Aluminum/PVC rope/fabric



Frame : Sand  
Rope : Sand  
Fabric : FONTELINA 180

Center Module  
KC8609N07ROP  
W85xD92xH73 cm  
Aluminum/PVC rope/fabric



Frame : Sand  
Rope : Sand  
Fabric : FONTELINA 180

Footstool  
KC8609N25TEX  
W85xD85xH40 cm  
Aluminum/fabric



Frame : Sand  
Fabric : FONTELINA 180

Dining Armchair  
KC8609N04ROP  
W67xD66xH80 cm  
Aluminum/PVC rope/fabric



Frame : Sand  
Rope : Sand  
Fabric : Vita 32



Frame : Black Mat  
Rope : Carbon  
Fabric : Volga C/163

Footstool  
KT8609N24CER  
W50xD85xH38 cm  
Aluminum/fabric



Frame : Sand  
Fabric : Travertino Roman



Frame : Black Mat  
Fabric : Terrazzo

FRAME:



Sand  
(70108)



Black Mat  
(13569A)

ROPE:



Sand  
(HF-006)



Carbon  
(HF-009)

FABRIC:



FONTELINA 180



Vita 32



Volga C/163

ROPE:



Travertino Roman



Terrazzo



# SHELL

Shell Series is inspired by the 'shell' in nature. With a three-dimensional weaving style as the highlight, each piece of this series integrates several techniques and textures and emphasizes the beauty of diverse handicrafts. Under the aesthetic of combining virtual and real, Shell Chair uses a simple aluminum frame with a fully woven backrest and seat to create a unique shape and comfortable experience. The backrest design uses KUNDESIGN's classic double-layer woven structure, with recognizable parallel lines, like the pattern on the shell, expressing rational geometric beauty. When seated, the shell-shaped backrest can provide good support with breathability. The seat surface chooses a more dense weaving style to ensure the supporting force. At the same time, the outstanding and quite artistic color design makes the different materials perfectly integrated.

loung chair  
KC8610N07ROP  
W70.5xD71.5xH77 cm  
Aluminum/PVC rope



Frame : Teaklook  
Rope : Sand



Frame : Teaklook  
Rope : Camel



Frame : Black Mat  
Rope : Carbon

Dining Armchair  
KC8610N01ROP  
W56xD56xH76 cm  
Aluminum/PVC rope



Frame : Teaklook  
Rope : Sand



Frame : Teaklook  
Rope : Camel



Frame : Black Mat  
Rope : Carbon

Bar Chair  
KC8610N17ROP  
W56xD57xH97 cm  
Aluminum/PVC rope



Frame : Teaklook  
Rope : Sand



Frame : Black Mat  
Rope : Camel



Frame : Black Mat  
Rope : Carbon

FRAME:



Black Mat  
(13569A)



Teaklook

ROPE:



Carbon  
(HF-009)



Sand  
(HF-006)



Camel

# STRING

Simple and pure, from lines into a plane, this is the design concept of String series. Each piece in this collection is completed with a suspended structure and a hand-weaving technique to create a classic, timeless impression. The high-resilience PVC ropes like the countless strings are tightly arranged in one go, bringing a wrapped sitting experience. Three frames of carbon black, rice white, clay color are unified with the color of ropes, giving the chair a delicate texture.

Dining Armchair  
KC8608N01ROP  
W51xD58.5xH83.5 cm  
Aluminum/PVC rope



Frame : Black Mat  
Rope : Carbon



Frame : Sandstone  
Rope : Sand



Frame : Sand  
Rope : Sand

Dining Armchair  
KC8608N04ROP  
W57xD61.5xH83.5 cm  
Aluminum/PVC rope



Frame : Terra cotta  
Rope : Honey



Frame : Black Mat  
Rope : Carbon



Frame : Sand  
Rope : Sand

Lounge chair  
KC8608N07ROP  
W70.5xD81xH81.5 cm  
Aluminum/PVC rope



Frame : Black Mat  
Rope : Carbon



Frame : Sandstone  
Rope : Sand



Frame : Sand  
Rope : Sand

Lounge chair  
KC8608N07ROP  
W70.5xD81xH81.5 cm  
Aluminum/PVC rope



Frame : Black Mat  
Rope : Carbon  
Fabric : Sand



Frame : Sandstone  
Rope : Sand  
Fabric : Volga C/163



Frame : Sand  
Rope : Sand  
Fabric : why001



Footstool  
KC8608N25ROP  
W70.5xD55xH38 cm  
Aluminum/PVC rope



Frame : Black Mat  
Rope : Carbon



Frame : Sandstone  
Rope : Sand



Frame : Sand  
Rope : Sand

2-Seater Lounge Chair  
KC8608N02ROP  
W151xD87xH80 cm  
Aluminum/PVC rope



Frame : Moss grey  
Rope : green



Frame : Black Mat  
Rope : Carbon

3-Seater Lounge Chair  
KC8608N03ROP  
W221xD87xH80 cm  
Aluminum/PVC rope



Frame : Moss grey  
Rope : green



Frame : Black Mat  
Rope : Carbon

Sun Lounger  
KS8608N19ROP  
W79xD182xH89 cm  
Aluminum/PVC rope

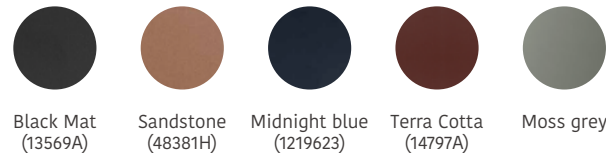


Frame : Moss grey  
Rope : green



Frame : Black Mat  
Rope : Carbon

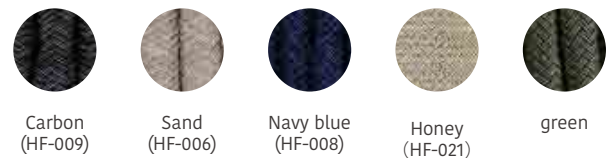
FRAME:



FABRIC:



ROPE:



# BAGEL

To make human beings more compatible with nature, Kun balances wood with hand knitting. Bagel collection featured of teak-base, tightly woven rope, soft cushions and comfortable back cushion. Bagel has inside and outside double design Which wrap your back comfortably with a fit body curve. Lounge chair, high-back lounge chair and dining chair are included in this series. A higher quality aluminum base could also be customized for dining chair in a lower price.

Dining Armchair (ALU base)  
KC8605B04ROP  
W63.5xD62xH79.5 cm  
Aluminum/PVC rope



Frame : Teaklook  
Rope : Light Grey  
Fabric : Leaf



Frame : Teaklook  
Rope : Sand  
Fabric : Orange

Lounge Armchair  
KC8605B10ROP  
W85.5xD79.5xH79.5 cm  
Aluminum/PVC rope



Frame : Teaklook  
Rope : Light Grey  
Fabric : Leaf



Frame : Teaklook  
Rope : Sand  
Fabric : Orange

Highback Lounge Armchair  
KC8605B121ROP  
W88xD86xH114.5 cm  
Aluminum/PVC rope



Frame : Teaklook  
Rope : Light Grey  
Fabric : Leaf



Frame : Teaklook  
Rope : Sand  
Fabric : Orange

2-Seater Sofa  
KC8605B11ROP  
W182xD90xH79.5 cm  
Aluminum/PVC rope



Frame : Teaklook  
Rope : Light Grey  
Fabric : Leaf



Frame : Teaklook  
Rope : Sand  
Fabric : Orange



Footstool  
 KC8605B25ROP  
 W72xD57xH31.5 (43) cm  
 Aluminum/PVC rope



Frame : Teaklook  
 Rope : Light Grey  
 Fabric : Leaf



Frame : Teaklook  
 Rope : Sand  
 Fabric : Orange

Coffee Table  
 KT8605B63CER  
 W120xD65xH34 cm  
 Aluminum/Ceramic top



Frame : Teaklook  
 Top : Jenny Grey

Coffee Table  
 KT8605B63ALU  
 Φ65x33 cm  
 Aluminum



Frame : Teaklook  
 Top : Olive Grey

Side Table  
 KT8605B64ALU  
 Φ52x45 cm  
 Aluminum



Frame : Teaklook  
 Top : Olive Grey

Dining Table  
 KT8602D27CER  
 Φ140x76cm  
 Φ90x76cm  
 Aluminum/Ceramic



Frame : Teaklook  
 Top : Jenny Grey

Dining Table  
 KT8602D27CER  
 KT8602D27TEK  
 Φ90x76cm  
 Aluminum/Ceramic/Teak



Frame : White Mat  
 Top : Teak



Frame : Teaklook  
 Top : Jenny Grey

Dining Table  
 KT8602D27CER  
 W160xD90xH76cm  
 W220xD100xH76cm  
 Aluminum/Ceramic



Frame : Olive  
 Top : Jenny Grey



Frame : Olive Grey  
 Top : Jenny Grey



Frame : Black Mat  
 Top : Calacata Gold

Extendable Table  
 KT8602D28CER  
 W220(280)xD100xH76cm  
 Aluminum/Ceramic



Frame : Olive  
 Top : Jenny Grey



Frame : Olive Grey  
 Top : Jenny Grey

Dining Table  
 KT8602D27CER  
 W148xD148xH76cm  
 Aluminum/Ceramic



Frame : Black Mat  
 Top : Travertino Roman

FRAME:



Black Mat  
 (13569A)



Anthracite  
 (72412)



Olive Grey  
 (1215966)



White Mat  
 (1200371)



Olive  
 (1219626)



Teaklook

ROPE:



Dark Grey  
 (HF-010)



Sand  
 (HF-006)



Light Grey  
 (44219)

FABRIC:



Leaf  
 (SEF4004)



Orange  
 (SEF4007)



Dark Grey  
 (SEF4006)



Sand  
 (SEF4008)



Light Grey  
 (SEF4002)

TOP:



Sharo Blue



Jenny Grey



Calacata Gold



Teak



Travertino Roman



# JUMBO

Jumbo series represents an unhurried contemporary attitude towards leisure life. It looks like a jumbo item with “elephant ears” from a distance. Jumbo Lounge Armchair is wide with a handwoven backrest and wings, expressing a sense of embrace. The color of the wood and the combination of weaving make it very natural and harmonious. The thick seat and comfortable cushions can let a person rest on it all afternoon. The whole series includes a lounge armchair, a 3-seater sofa, footstool and dining chair.

Dining Armchair  
KC8607N04ROP  
W63xD60.5xH79.5 cm  
Aluminum/PVC Rope



Frame : Teaklook  
Rope : Dark Grey  
Fabric : Dark Grey



Frame : Teaklook  
Rope : Sand  
Fabric : Light Grey

Lounge Armchair  
KC8607N10ROP  
W91xD90.5xH81.5 cm  
Aluminum/PVC Rope



Frame : Teaklook  
Rope : Dark Grey  
Fabric : Dark Grey



Frame : Teaklook  
Rope : Sand  
Fabric : Light Grey

Highback Lounge Armchair  
KC8607N121ROP  
W104.5xD95xH107 cm  
Aluminum/PVC Rope



Frame : Teaklook  
Rope : Dark Grey  
Fabric : Dark Grey



Frame : Teaklook  
Rope : Sand  
Fabric : Light Grey

2-Seater Sofa  
KC8607N11ROP  
W165.5xD90.5xH81.5 cm  
Aluminum/PVC Rope



Frame : Teaklook  
Rope : Dark Grey  
Fabric : Dark Grey



Frame : Teaklook  
Rope : Sand  
Fabric : Light Grey

3-Seater Sofa  
KC8607N12ROP  
W236xD90.5xH81.5 cm  
Aluminum/PVC Rope



Frame : Teaklook  
Rope : Dark Grey  
Fabric : Dark Grey



Frame : Teaklook  
Rope : Sand  
Fabric : Light Grey

Footstool  
KC8607N25TEX  
W72xD55xH42 cm  
Aluminum



Frame : Teaklook  
Fabric : Dark Grey



Frame : Teaklook  
Fabric : Light Grey

Coffee Table  
KT8605B63CER  
W120xD65xH34 cm  
Aluminum/Ceramic top



Frame : Teaklook  
Top : Jenny Grey

FRAME:



Teaklook

ROPE:



Dark Grey  
(HF-010)



Sand  
(HF-006)

FABRIC:



Dark Grey  
(SEF4006)



Light Grey  
(SEF4002)



Fontelina 180



Sand  
(SEF4008)



# PILLOW

The PILLOW is the result of Kun's exploration for the possibility of outdoor upholstery. Continuous adjustments were made during the development process to find the current structural proportion that merges functionality with streamlined aesthetics. The back and armrest cushions of the collection resemble soft pillows - just like the collection name - whose coverings can be removed for easy cleaning. Wrapped with KunDesign Tex, a material with remarkable durability and resistance to outdoor conditions, the quick-drying cushions are designed to be placed outside. Seated on a teak or bamboo base frame to create a textual contrast, which are FSC certified in consideration of the environment. With versatile modular components, the Pillow sofa is suitable for all interior and exterior settings.

Single Sofa  
KC8804B10TEX  
W114.5xD94xH82.5 cm  
Aluminum/Teaklook ALU  
Knocked-Down



Frame : White Mat  
Fabric : Fontelina 180



Frame : Black Mat  
Fabric : Marengo



Corner Module  
KC8804B13TEX  
W94xD94xH82.5 cm  
Aluminum/Teaklook ALU  
Knocked-Down



Frame : White Mat  
Fabric : Fontelina 180



Frame : Black Mat  
Fabric : Marengo



Center Module  
KC8804B07TEX  
W83.5xD94xH82.5 cm  
Aluminum/Teaklook ALU  
Knocked-Down



Frame : White Mat  
Fabric : Fontelina 180



Frame : Black Mat  
Fabric : Marengo



2-Seater Module  
KC8804B08TEX  
W165.5 xD94xH82.5 cm  
Aluminum/Teaklook ALU  
Knocked-Down



Frame : White Mat  
Fabric : Fontelina 180



Frame : Black Mat  
Fabric : Marengo



Chaise Lounge Left Arm Module  
KS8804B88TEX  
W184.5xD98xH82.5 cm  
Aluminum/Teaklook ALU  
Knocked-Down



Frame : White Mat  
Fabric : Fontelina 180



Frame : Black Mat  
Fabric : Marengo



2-Seater Sofa Right Arm Module  
KC8804B86TEX  
W181xD94xH82.5 cm  
Aluminum/Teaklook ALU  
Knocked-Down



Frame : White Mat  
Fabric : Fontelina 180



Frame : Black Mat  
Fabric : Marengo



2-Seater Sofa  
KC8804B11TEX  
W197.5xD94xH82.5 cm  
Aluminum/Teaklook ALU  
Knocked-Down



Frame : White Mat  
Fabric : Fontelina 180



Frame : Black Mat  
Fabric : Marengo



Sun Lounger  
KS8804A59TEX  
W202xD75.5xH33 cm  
Aluminum/Teaklook ALU



Frame : White Mat  
Fabric : Fontelina 180



Frame : Black Mat  
Fabric : Marengo

Footstool  
KC8804B25TEX  
W95.5xD90.5xH42 cm  
Aluminum/Teaklook ALU



Frame : White Mat  
Fabric : Fontelina 180



Frame : Black Mat  
Fabric : Marengo



Coffee Table  
 KT8804A23ALU  
 KT8804A23CER  
 W125xD76.5xH26 cm  
 Aluminum/Teak/Ceramic



Frame : White Mat  
 Top : Teaklook



Frame : Olive  
 Top : Snow White

Side Table  
 KT8804A24ALU  
 W87xD50xH23 cm  
 Aluminum/Teaklook ALU



Frame : White Mat  
 Top : Teaklook

FRAME:



Black Mat  
 (13569A)



White Mat  
 (1200371)



Olive  
 (1219626)



Teaklook

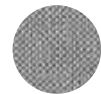
FABRIC:



Marengo  
 (Vita53)



VITA 17



VITA GRIS 51



Fontelina 180

TOP:



Snow White



**Set-1**

2-Seater Sofa Right Arm Module (KC8804B86TEX)  
 Chaise Lounge Left Arm Module (KS8804B88TEX)  
 2-Seater Sofa (KC8804B11TEX)  
 Coffee Table (KT8804A23ALU)  
 Side Table (KT8804A24ALU)  
 Footstool(KC8804B25TEX)



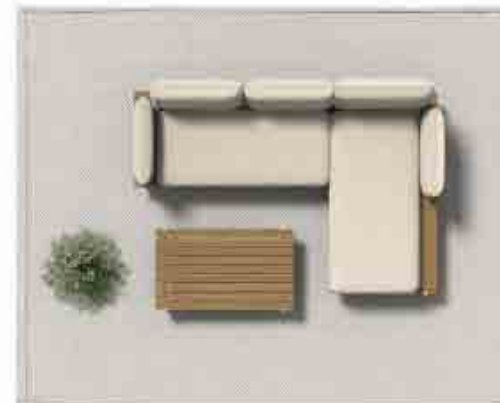
**Set-2**

2-Seater Sofa Right Arm Module (KC8804B86TEX)  
 2-Seater Sofa Left Arm Module (KC8804B85TEX)  
 Corner Module (KC8804B13TEX)  
 Coffee Table (KT8804A23ALU)



**Set-3**

2-Seater Sofa (KC8804B11TEX)  
 Single Sofa (KC8804B10TEX)  
 Coffee Table (KT8804A23ALU)



**Set-4**

2-Seater Sofa Right Arm Module (KC8804B86TEX)  
 Chaise Lounge Left Arm Module (KS8804B88TEX)  
 Coffee Table (KT8804A23ALU)





**Set-5**

Chaise Lounge Left Arm Module (KS8804B88TEX)  
 Chaise Lounge Right Arm Module (KS8804B89TEX)  
 2-Seater Module(KC8804B08TEX)  
 Center Module(KC8804B07TEX)  
 Coffee Table (KT8804A23ALU)



**Set-6**

2-Seater Sofa Left Arm Module (KC8804B85TEX)  
 Corner Module (KC8804B13TEX)  
 Footstool(KC8804B25TEX)  
 Side Table (KT8605B64ALU)  
 Side Table (KT8602N64TEK)  
 Coffee Table(KT8602N63CER)  
 Coffee Table (KT8804A23ALU)

# CHIC

Chic folding chair was born to pay tribute to the classic Director's Chair in 20th century, and its design inspiration can be traced back to the earliest. In ancient Rome. Through modern technology, Chic folding chair has simplified and optimized the chair structure to the maximum extent, and every part is integrated. Body casting, reinterpreting standardization from excellent details. Its firm chair body consists of metal frame and hand-sewn three-dimensional sewing fabric. Quick-drying sponge is built into backrest and seat surface, which has both aesthetic feeling and sitting comfort. In daily use, Chic folding chair is easy to store, showing quality and weight. And can be applied to various scenes.

Folding chair  
 AC5746A55TEX  
 W58\*D52.5\*H88 cm  
 Aluminum/Sling/Teak



Frame : Sandstone  
 Sling : Sand



Frame : White Mat  
 Sling : Light Grey



Frame : Dark Green  
 Sling : Carbon

Folding chair  
 AC5746B55TEX  
 W58\*D52.5\*H88cm  
 Aluminum/Sling



Frame : Sandstone  
 Sling : Sand



Frame : White Mat  
 Sling : Light Grey



Frame : Dark Green  
 Sling : Carbon

**FRAME:**



Sandstone  
 (48381H)



Dark Green  
 (4666HA)



White Mat  
 (1200371)

**SLING:**



Carbon  
 (T2155)



Light Grey  
 (50567)



Sand  
 (YLSJ006)



# LOOP

The LOOP chair was originally designed to express continuous lines. The entire chair is woven with a single continuous rope. In order to ensure continuity and product quality, the back and the seat of the chair were proportionally divided into four parts, which not only boosts the appearance, but also increases the product lifespan. Soft as well as responsive, the chair provides a comfortable seating experience without the need of a cushion. Additionally, the wear-resisting and strong PVC simplifies the cleaning processing - use a soft brush to give it a fresh new look.

Dining Armchair  
KC8604N04ROP  
W58.5xD61.5xH81 cm  
2.5cm Rope  
Aluminum/PVC rope



Frame : Juniper Green  
Rope : Honey



Frame : Sandstone  
Rope : Sand



Frame : Black Mat  
Rope : Carbon



Frame : Terra Cotta  
Rope : Honey

Lounge chair  
KC8604A07ROP  
W69.5xD67xH77.5 cm  
2.5cm Rope  
Aluminum/PVC rope



Frame : Juniper Green  
Rope : Honey



Frame : Sandstone  
Rope : Sand



Frame : Black Mat  
Rope : Carbon



Frame : Terra Cotta  
Rope : Honey

Bar chair  
KC8604N17ROP  
W55xD48.5xH91 cm  
2.5cm Rope  
Aluminum/PVC rope



Frame : Juniper Green  
Rope : Honey



Frame : Sandstone  
Rope : Sand



Frame : Black Mat  
Rope : Carbon



Frame : Terra Cotta  
Rope : Honey

FRAME:



Black Mat  
(13569A)



Juniper Green  
(14940A)



Terra Cotta  
(14797A)



Sandstone  
(48381H)

ROPE:



CARBON  
(HF-009)



Light Grey  
(44219)



Honey  
(HF-021)

# OVAL

OVAL chair is our contemporary and three-dimensional take of the traditional board back chair. The edge stamping craft allows it to have a large and three-dimensional backrest - comfortable and compact. The legs have plump lines that give off a powerful presence when placed in open space. We use wooden finish on the aluminum seat surface to make it more durable and easier to maintain while retaining the warm visual sense of wood.

Dining Armchair  
KC8507N04ALU  
W61xD56xH85 cm  
Aluminum



Frame : Olive



Frame : Black Mat



Frame : Sandstone

Lounge Armchair  
KC8507N10ALU  
W74xD66xH80 cm  
Aluminum



Frame : Olive



Frame : Black Mat



Frame : Sandstone

FRAME:



Black Mat  
(13569A)



Olive  
(1219626)



Sandstone  
(48381H)



# RUGBY

An interactive conversation between metal, wood, and fabric resulted in the design of the RUGBY series. The upholstery's plump shape is relieved by spindle shaped-legs, so the resulting structure takes on a refreshing rather than chunky appearance. The armrests have a width and height that match the body's natural arm placement, and also serve as partition from the cold metal frame. Constructed with comfortable materials that are weather-resistant, the collection can be used in all spaces, both outdoors and indoors. With quality and weather proof teak wood set on aluminum legs, the lounge coffee table is designed to complement the contemporary lifestyle. It is deliberately set at a height that allows the table to be used not just for a singular purpose, but as a versatile and multifunctional product in your home.

Center Module  
KC8603N07ROP  
W79.5xD87xH77 cm  
Aluminum/PVC rope/Plastic wood



Frame : Black Mat  
Rope: Dark Grey  
Fabric : Dark Grey



Frame : White Mat  
Rope: Sand  
Fabric : Sand

Lounge Armchair  
KC8603N10ROP  
W87xD92xH77 cm  
Aluminum/PVC rope/Plastic wood



Frame : Black Mat  
Rope: Dark Grey  
Fabric : Dark Grey



Frame : White Mat  
Rope: Sand  
Fabric : Sand

Corner Module  
KC8603N13ROP  
W86xD86xH77 cm  
Aluminum/PVC rope/Plastic wood



Frame : Black Mat  
Rope: Dark Grey  
Fabric : Dark Grey



Frame : White Mat  
Rope: Sand  
Fabric : Sand

2-Seater Sofa Right Arm Module  
KC8603N86ROP  
W166xD95xH77 cm  
Aluminum/PVC rope/Plastic wood



Frame : Black Mat  
Rope: Dark Grey  
Fabric : Dark Grey



Frame : White Mat  
Rope: Sand  
Fabric : Sand

2-Seater Sofa Left Arm Module  
KC8603N85ROP  
W166xD95xH77 cm  
Aluminum/PVC rope/Plastic wood



Frame : Black Mat  
Rope: Dark Grey  
Fabric : Dark Grey



Frame : White Mat  
Rope: Sand  
Fabric : Sand

2-Seater Sofa  
KC8603N11ROP  
W171xD95xH77 cm  
Aluminum/PVC rope/Plastic wood



Frame : Black Mat  
Rope: Dark Grey  
Fabric : Dark Grey



Frame : White Mat  
Rope: Sand  
Fabric : Sand

Lounge Height Coffee Table  
KT8603N23NTK  
W160xD80xH66 cm  
Aluminum/Plastic wood



Frame : Black Mat  
Top : Plastic wood

Coffee Table  
KT8603A23NTK  
W130xD72.5xH33 cm  
Aluminum/Plastic wood



Frame : Black Mat  
Top : Plastic wood

End Table  
KT8603N24NTK  
W72.5xD72.5xH28 cm  
Aluminum/Plastic wood



Frame : Black Mat  
Top : Plastic wood





**Set-1**  
 2-Seater Sofa Left Arm Module (KC8603N85ROP)  
 2-Seater Sofa Right Arm Module (KC8603N86ROP)  
 Corner Module (KC8603N13ROP)  
 End Table (KT8603N24NTK)



**Set-2**  
 2-Seater Sofa Left Arm Module (KC8603N85ROP)  
 2-Seater Sofa Right Arm Module (KC8603N86ROP)  
 Lounge Armchair (KC8603N10ROP)  
 Center Module (KC8603N07ROP)  
 Corner Module (KC8603N13ROP)  
 Coffee Table (KT8603A23NTK)



**Set-3**  
 2-Seater Sofa (KC8603N11ROP)  
 Lounge Armchair (KC8603N10ROP)  
 Coffee Table (KT8603A23NTK)



**Set-4**  
 2-Seater Sofa Left Arm Module (KC8603N85ROP)  
 Corner Module (KC8603N13ROP)  
 Center Module (KC8603N07ROP)  
 Coffee Table (KT8603A23NTK)  
 End Table (KT8603N24NTK)



**Set-5**  
 2-Seater Sofa Left Arm Module (KC8603N85ROP)  
 2-Seater Sofa Right Arm Module (KC8603N86ROP)  
 Center Module (KC8603N07ROP)  
 Corner Module (KC8603N13ROP)  
 Lounge Armchair (KC8603N10ROP)  
 Coffee Table (KT8603A23NTK)  
 End Table (KT8603N24NTK)

FRAME:



Black Mat  
(13569A)



White Mat  
(1200371)

FABRIC:



Dark Grey  
(SEF4006)



Sand  
(SEF4008)

ROPE:



Dark Grey  
(HF-010)



Sand  
(HF-006)

TOP:



Plastic Wood



# NEST

The geometric weavings of the NEST collection mimic the appearance of rattan, giving the series a tropical look. On the highback lounge chair, the weavings create a partition around the body for privacy. Crafted in weather-resistant ropes and quick-dry cushion, the sofa is suitable for both indoor and outdoor use.

Dining Armchair  
KC8602N04ROP  
W57xD56xH81 cm  
Aluminum/PVC rope



Frame : Black Mat  
Rope : Dark Grey  
Fabric : Dark Grey



Frame : Olive  
Rope : Green  
Fabric : Sand

Lounge Armchair  
KC8602C10ROP  
W73xD79xH74 cm  
Aluminum/PVC rope



Frame : Black Mat  
Rope : Dark Grey  
Fabric : Dark Grey



Frame : Olive  
Rope : Green  
Fabric : Sand

Highback Lounge Armchair  
KC8602A10ROP  
W97.5xD91xH112 cm  
Aluminum/PVC rope



Frame : Black Mat  
Rope : Dark Grey  
Fabric : Dark Grey



Frame : Olive  
Rope : Green  
Fabric : Sand



Frame : Curcum  
Rope : Sand  
Fabric : Leaf

## FRAME:



Black Mat  
(13569A)



Olive  
(1219626)



Curcum  
(1216034)

## FABRIC:



Dark Grey  
(SEF4006)



Sand  
(SEF4008)



Leaf  
(SEF4004)

## ROPE:



Dark Grey  
(HF-010)



Sand  
(HF-006)



Green  
(HF-008)

# BANYAN TREE

With a curvature that conforms to the natural arch of the human spine, the back of the Banyan Tree is designed to put the body at ease. The interwoven strands are reminiscent of tree vines to create a distinctive look that can easily complement its surroundings. Weaved in weather-resistant and easy-to-clean Kundesign Rope, the Banyan Tree is a versatile series that can be placed in small living spaces, both indoors and outdoors.

Dining Armchair  
KC8601N04ROP  
W59xD59.5xH80.5 cm  
Aluminum/PVC rope



Frame : Anthracite  
Rope : Green  
Fabric : Dark Grey



Frame : White Mat  
Rope : Sand  
Fabric : Light Grey

Lounge Armchair  
KC8601N10ROP  
W80xD77xH90 cm  
Aluminum/PVC rope



Frame : Anthracite  
Rope : Green  
Fabric : Dark Grey



Frame : White Mat  
Rope : Sand  
Fabric : Light Grey

Highback Lounge Armchair  
KC8601A10ROP  
W80xD92xH113 cm  
Aluminum/PVC rope



Frame : Anthracite  
Rope : Green  
Fabric : Dark Grey



Frame : White Mat  
Rope : Sand  
Fabric : Light Grey

Highback Lounge Armchair  
KC8601B10ROP  
W78xD89xH107 cm  
Aluminum/PVC rope



Frame : Anthracite  
Rope : Green  
Fabric : Dark Grey



Frame : White Mat  
Rope : Sand  
Fabric : Light Grey



Rocking Armchair  
KC8601N90ROP  
W80xD92xH113 cm  
Aluminum/PVC rope



Frame : Anthracite  
Rope : Green  
Fabric : Dark Grey



Frame : White Mat  
Rope : Sand  
Fabric : Light Grey

Rocking Armchair  
KC8601B90ROP  
W85xD91xH107 cm  
Aluminum/PVC rope



Frame : Anthracite  
Rope : Green  
Fabric : Dark Grey



Frame : White Mat  
Rope : Sand  
Fabric : Light Grey

2-Seater Sofa  
KC8601N11ROP  
W167xD82xH90 cm  
Aluminum/PVC rope



Frame : Anthracite  
Rope : Green  
Fabric : Dark Grey



Frame : White Mat  
Rope : Sand  
Fabric : Light Grey

Footstool  
KC8601N25ROP  
W68xD50xH38 cm  
Aluminum/PVC rope



Frame : Anthracite  
Rope : Green  
Fabric : Dark Grey



Frame : White Mat  
Rope : Sand  
Fabric : Light Grey

FRAME:  
Anthracite  
(72412)



White Mat  
(1200371)



ROPE:  
Sand  
(HF-006)



Green  
(HF-008)



FABRIC:  
Dark Grey  
(SEF4006)



Light Grey  
(SEF4002)



# FLOW

Flow Swing is designed for leisure time to make the outdoor life full of fun. Its inspiration comes from the magic carpet in the myth story, trying to capture the happy time of childlike innocence through a special form. The swing is light, stable, and in a dynamic style. The seat has a slight arc shape, stretched with waterproof PVC fabric, can be used together with a soft cushion. Its handrails on both sides add teak elements for a natural touch. LED lights are hidden inside the canopy to provide light for reading or at night. In structural design, the stainless steel rockers can present a stable and smooth swaying effect. The swing also uses a smart flat packaging design which is more convenient for transportation and installation.

Flow Swing  
KP8704N56TEX  
W155xD165xH200 cm  
Aluminium



Frame : Juniper Green  
Fabric : Sunproof-161



Frame : Magmatic red  
Fabric : Orange

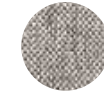


FRAME:  
Juniper Green  
(14940A)



Magmatic red  
(PE7001)

FABRIC:  
Sunproof-161



Orange  
(DCF0120001)



# RIBBON

Ribbon Stool is an abstraction of natural things and simple manual-era life. It conveys a relaxed and beautiful emotion. Its round shape looks like vigorous seeds, leaves, plump succulent plants and grains. The banding design represents the easy 'hand tying' actions, such as bundling hay, tying a bouquet or a gift. Ribbon Stool has a multi-layer design with removable surface cover for easy cleaning and replacement, waterproof liner, and bottom counterweight for excellent outdoor performance. The stylish color and a variety of sizes make it flexible. This Stool can be used with dining tables, sofas or as combination furnishing of commercial space.

Stool  
KC8806N14FAB  
W44xD44x45 cm



Fraric : Leaf



Fraric : Light Grey

Stool  
KC8806N14FAB  
W66xD47x39 cm



Fraric : Leaf



Fraric : Light Grey

FABRIC:



Vita30



Light Grey  
(SEF4002)

# MOONCAKE

Inspired by joyful holiday moments in life, the Mooncake stool is shaped like a traditional snack in the Mid-Autumn Festival, with continuous arc design and bright colors, presenting a light and cheerful playfulness. This all-aluminum stool is waterproof, easy to clean and maintain. It is suitable as an item to decorate the courtyard or indoor space. It can also be used as a side table to create a vibrant atmosphere.

Stool  
KT8602F64ALU  
Φ43.5x40 cm  
Aluminium  
Knocked-Down



Frame : Olive



Frame : Orange



FRAME:



Olive  
(1219626)



Orange  
(1219624)



# BALANCE

A return to the basics was the central theme at the start of our weight table design process. Weights are used as mass standards to express our understanding of the load bearing of the table. The lines on the weights are designed with respect to the golden ratio, thus the top and bottom components are firm and secure. The series of weights also have symmetrical upper and lower end-tables, with the upper one removable to serve dual functions of storage and flower arrangement.

Side Table  
KT8508N64TEK  
Φ33.6x51 cm  
Aluminum/Teak



Frame : Olive  
Top : Teak



Frame : Black Mat  
Top : Teak



Frame : Olive Grey  
Top : Teak

Side Table  
KT8602C64ALU  
Φ45x52 cm  
Aluminum



Frame : Terra Cotta  
Top : Terra Cotta



Frame : Black Mat  
Top : Black Mat



Frame : Olive  
Top : Olive

Dining Table  
KT8602C27CER  
Φ75x75 cm  
Aluminum/Ceramic



Frame : Olive  
Top : Jenny Grey



Frame : Orange  
Top : Jenny Grey



Frame : Black Mat  
Top : Dark Grey

Dining Table  
AM9028N47TEK  
KB8602C37ALU  
Φ75x75 cm  
Aluminum/Teak



Frame : Olive  
Top : Teak



Frame : Black Mat  
Top : Teak



Frame : White Mat  
Top : Teak

Dining Table  
KT8602C27CER  
Φ100/120x75 cm  
Aluminum/Ceramic



Frame : Olive Grey  
Top : Jenny Grey



Frame : Black Mat  
Top : Sharo Blue

Dining Table  
KM8602N46TEK  
KB8602C37ALU  
Φ100x100x75 cm  
Aluminum/Ceramic



Frame : Sand  
Top : Teak

Dining Table  
KM8602N46CER  
KB8602C37ALU  
Φ100x100x75 cm  
Aluminum/Ceramic



Frame : Sand  
Top : Travertino Roman

## FRAME:



Black Mat  
(13569A)



Olive Grey  
(1215966)



White Mat  
(1200371)



Sand  
(70108)



Terra Cotta  
(14797A)



Orange  
(1219624)

## TOP:



Sharo Blue



Dark Grey



Jenny Grey



Teak



Travertino Roman



# BERGEN

Bergen table series includes side table, dining table, bar table etc., which is composed by the simple geometric elements and pillars. The radians and details express the smooth rounded characteristics. The table top and bottom can be changed for a variety of colors, and the pillar can be solid color or wooden look by heat transfer process.

Dining Table  
Φ70x75 cm  
Aluminum/Ceramic/Teak



AM9028N47CER  
AB0607N37ALU  
Frame : Black Mat  
Top : Jenny Grey



AM9003N47TEK  
AB0607N37ALU  
Frame : Juniper Green  
Top : Teak



AM9004A47ALU  
AB0607N37ALU  
Frame : Terra Cotta  
Top : Terra Cotta



Dining Table  
W70xD70xH75cm  
Aluminum/Ceramic/Teak



AM9028N46CER  
AB0607N38ALU  
Frame : Black Mat  
Top : Jenny Grey



AM9003N46TEK  
AB0607N38ALU  
Frame : Juniper Green  
Top : Teak



KM8511N46ALU  
AB0607N38ALU  
Frame : Terra Cotta  
Top : Terra Cotta



Bar Table  
Φ60x105cm  
Aluminum/Ceramic



AM9028N47CER  
AB0607N37ALU  
Frame : Black Mat  
Top : Jenny Grey



AM9004A47ALU  
AB0607N37ALU  
Frame : Terra Cotta  
Top : Terra Cotta



Side Table  
Φ45x48 cm  
Aluminum



KT8512N64ALU  
Frame : Juniper Green  
Top : Jenny Grey



Side Table  
Φ45x68cm  
Aluminum/Ceramic



AT0608N64CER  
Frame : Black Mat  
Top : Snow White



Dining Table  
W140xD70xH75cm  
Aluminum/Ceramic/Teak



AM9028N45CER  
AB0607N37ALU  
Frame : Black Mat  
Top : Jenny Grey



FRAME:



Black Mat  
(13569A)



Juniper Green  
(14940A)



Terra Cotta  
(14797A)

TOP:



Jenny Grey



Snow White



Teak



# LOTUS

The petal design of its central pillar bestows the Lotus with understated elegance. Select from a range of nature-inspired colours that will allow the series, which includes both tables and vases, to easily integrate into various indoor and outdoor décor.

Dining Table  
KT8602N27CER  
Φ90x75 cm  
Aluminum/Ceramic



Frame : Juniper Green  
Top : Jenny Grey



Frame : Olive Grey  
Top : Jenny Grey

Bar Table  
KT8602N29CER  
Φ80x108 cm  
Aluminum/Ceramic



Frame : Olive Grey  
Top : Jenny Grey

Dining Table  
KT8602N27CER  
W220xD100xH75 cm  
W160xD80xH75 cm  
Aluminum/Ceramic

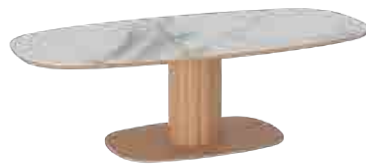


Frame : Juniper Green  
Top : Jenny Grey



Frame : Olive Grey  
Top : Jenny Grey

Dining Table  
KT8602F27CER  
W240xD118xH75 cm  
Aluminum/Ceramic



Frame : Sandstone  
Top : Snow White

Coffee Table  
KT8602N63CER  
Φ80x34 cm  
Aluminum/Ceramic



Frame : Juniper Green  
Top : Jenny Grey

Side Table  
KT8602N64TEK  
Φ48x54 cm  
Aluminum/Teak



Frame : Silver Grey  
Top : Teak



Frame : Olive  
Top : Teak

Coffee Table  
KT8602H63CER  
W120xD71.5xH35 cm  
Aluminum/Teak



Frame : Sand  
Top : Travertino Roman

Coffee Table  
KT8602H63HPL  
W95xD61xH43 cm  
Aluminum/Teak



Frame : Sand  
Top : Teak

Coffee Table  
KT8602F27CER  
Φ140x75 cm  
Aluminum/Teak



Frame : Olive  
Top : White Travertino Romano



Frame : Black Mat  
Top : Black

Coffee Table  
KT8602F27TEK  
Φ140x75 cm  
Aluminum/Teak



Frame : Sand  
Top : Teak



Frame : Black Mat  
Top : Teak

## FRAME:



Olive Grey  
(1215966)



Silver Grey  
(93328AC)



Juniper Green  
(14940A)



Olive  
(1219626)



Black Mat  
(13569A)



Sandstone  
(48381H)



Sand  
(70108)

## TOP:



Jenny Grey



Teak



calacata gold



Travertino Roman



White Travertino Romano



# PIPE BARCART

Derived from the PIPE double deck coffee table, the bar cart has been designed in full consideration of its usage and movement. It has a stable structure that is easily maneuvered around. Minimalistic and modern, the design of the PIPE bar cart can be well integrated into the outdoor environment.

Bar Cart  
KT8503N42ALU  
W63xD95xH92 cm  
Aluminium/Teaklook  
Knocked-Down



Frame : Olive Grey



Frame : Olive



## FRAME:



Olive  
(1219626)



Olive Grey  
(1215966)

# LOTUS PLANTER

The Lotus planter continues to express the family character of the series, with the central column shaped like a petal and a continuous combination of one petal to another. The overall flowerpot upper matches the rhythmic base of the petals below, achieving a more aesthetically pleasing ratio. This series is more suitable for home use with four reasonable sizes to meet your different plant needs.

Planter(L)  
KH8602A51ALU  
Φ40x42 cm  
Aluminum



Frame : Olive  
Frame : Anthracite



Frame : Olive Grey

Planter(XL)  
KH8602A51ALU  
Φ50x53 cm  
Aluminum



Frame : Olive  
Frame : Anthracite



Frame : Olive Grey

Planter(H)  
KH8602B51ALU  
Φ40x52 cm  
Aluminum



Frame : Olive



Frame : Orange



Frame : Olive Grey

Planter  
KH8602N51ALU  
Φ65x45 cm  
Aluminum/Teaklook



Frame : Juniper Green  
Top : Teaklook



Planter  
KH8602N51ALU  
Φ65x83 cm  
Aluminum/Teaklook



Frame : Silver Grey  
Top : Teaklook

FRAME:



Anthracite  
(72412)



Olive Grey  
(1215966)



Silver Grey  
(93328AC)



Olive  
(1219626)



Juniper Green  
(14940A)



Orange  
(1219624)

TOP:



Teak

# ROOT PLANTER

Root flowerpot refines the "rooted" state of wild plants, and expresses full vitality with abstract design language. It consists of an ellipse. It consists of a tub and a bracket, which can be split up and down. The unique "V-shaped" structure creates a feeling of strength sprouting upward. Among them, the tube basin. The prototype is taken from the vessels of the North African tribes, which is round and simple; The three feet at the bottom are as light and stable as the root system of a plant that goes deep into the soil. Solid. This bracket is not only convenient to move, but also improves the air permeability of the flowerpot, which is beneficial to daily planting. Color matching of Root flowerpot comes from. In the Gobi and oasis of nature, the fine sand-like spray texture presents matte texture. Can satisfy people. Demand for different plants can be used outdoors or at home.

Planter  
KH8513N51ALU  
Φ44\*65 cm  
Aluminum



Frame : Olive  
Frame : Taupe



Frame : Black Mat

Planter  
KH8513N51ALU  
Φ57x79 cm  
Aluminum



Frame : Olive  
Frame : Taupe



Frame : Black Mat

FRAME:



Black Mat  
(13569A)



Taupe  
(72522)



Olive  
(1219626)



# LANTERN

The inspiration of Lantern series comes from the combination of oriental aesthetics and modern design. Lantern series is about "light", the lamp absorbs the configuration elements and special style from the traditional Chinese lantern and hand-basket. It retains the elegant "handle" design on the top, which can be easily carried and moved at will. For this hand lamp, it adds a small round bottom, which you can display plant, flower, decoration pieces to build the cozy atmosphere, delightfully fresh nature.

Hand Lamp  
KH8510N117ALU  
W14.7xD13.8xH26.5 cm  
Aluminum/LED



Frame : Orange



Frame : Olive



Frame : Olive Grey



Frame : Black Mat

Hand Lamp  
KH8510N117ALU  
W16xD16.6xH42 cm  
Aluminum/LED



Frame : Orange



Frame : Olive



Frame : Olive Grey

Floor Lamp(L)  
KH8510A117ALU  
W33xD33xH180 cm  
Aluminum/LED  
Knocked-Down



Frame : Black Mat



Frame : Olive

Floor Lamp(XL)  
KH8510B117ALU  
W45xD159xH200 cm  
Aluminum/LED  
Knocked-Down



Frame : Orange



Frame : Black Mat

Hand Lamp  
KH8510C117ALU  
Φ22\*25 cm  
Aluminum/LED



Frame : Black Mat

Hand Lamp  
KH8510C117ALU  
Φ22\*42 cm  
Aluminum/LED



Frame : Black Mat

FRAME:



Black Mat  
(13569A)



Olive Grey  
(1215966)



Olive  
(1219626)



Orange  
(1219624)



# LOTUS OUTDOOR FUNCTION ISLAND

The design inspiration for the Lotus series comes from the extraction and expression of the shape of petals. The whole series takes the central petal column as the 'family trait', with petals repeatedly stacked and fixed, expressing a sense of rhythm. Lotus Outdoor Function Island is designed for the outdoor kitchen scene and combines storage, a mini fridge, a sink, a built-in ice bucket, lighting, and more. With the special arc-type column as a support, this function island expresses an elegant, unique temperament.

AKC010001  
W83xD79.6xH102 cm  
Aluminum/Ceramic



Frame : Black Mat  
Top : Jenny Grey

AKC020001  
W139.4xD79.6xH102 cm  
Aluminum/Ceramic



Frame : Black Mat  
Top : Jenny Grey

## FRAME:



White Mat  
(1200371)



Black Mat  
(13569A)



Sandstone  
(48381H)



Olive  
(1219626)

## TOP:



calacata gold



Jenny Grey



sharo blue

# ISLAND

AKA010004  
W257xD62xH86 cm  
Aluminum/Ceramic



Frame : White Mat  
Top : light grey

AKB010004  
W253xD62xH100 cm  
Aluminum/Ceramic



Frame : White Mat  
Top : light grey

## FRAME:



White Mat  
(1200371)



Black Mat  
(13569A)

## TOP:



calacata gold



Jenny Grey



sharo blue



# PAVILION

Pavilion is designed to naturally extend indoor life to the outdoors with an architectural style. It is a 'continuation of the house', emphasizing a non-temporality, and encouraging normalization of enjoying the outdoors. The entire pavilion is based on a standard module structure with a narrow eaves design. Through the selection of electric shutters, rolling curtains, folding glass doors, grids and other elements, it can create a special outdoor space with different forms. Pavilion includes terracotta, olive green, black, and white styles, presenting a more youthful, smart, thoughtful, and diverse outdoor lifestyle.

Pavilion  
AP6500  
W300xD300xH270 cm  
Aluminium



Frame :Black Mat

K/D

Pavilion  
AP6500  
W300xD400xH270 cm  
Aluminium



Frame : Black Mat

K/D

Pavilion  
AP6500  
W300xD300xH270 cm  
Aluminium



Frame : Sandstone

K/D

Pavilion  
AP6500  
W300xD400xH270 cm  
W300xD300xH270 cm  
Aluminium



Frame : Olive

K/D

Pavilion  
AP6501N136ALU  
330\*268\*270cm  
WITHOUT EAVES

AKG002008  
302.6\*62\*110cm  
WITHOUT EAVES

530\*368\*270cm  
WITH EAVES



Frame : Sand

Pavilion  
AP6301N135ALU  
W268xD268xH270 cm  
Aluminium

AKG001000  
W248xD62xH110 cm  
Aluminium



Frame : White Mat

Pavilion  
AP6100N149ALU  
W399xD244xH244 cm  
Aluminium

AKF010000  
W351.5xD52xH236.7 cm  
Aluminium

AKF020000  
W351.5xD83xH91.5 cm  
Aluminium



Frame : White Mat

FRAME:



Black Mat  
(13569A)



White Mat  
(1200371)



Olive  
(1219626)



Sandstone  
(48381H)



Sand  
(70108)

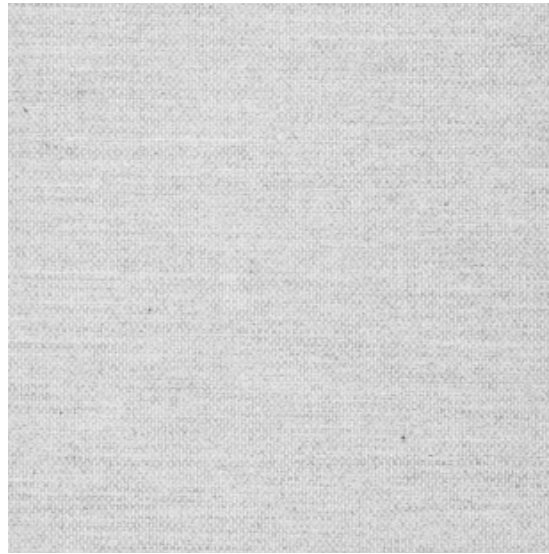






# FABRIC

100% SOLUTION DYED ACRYLIC FABRIC



LIGHT GREY(SEF4002)

WATER AND STAIN REPELLENT/RESISTANT TO UV RAYS



LIGHT GREY(SEF4002)

SAND (SEF4008)

DARK GREY(SEF4006)

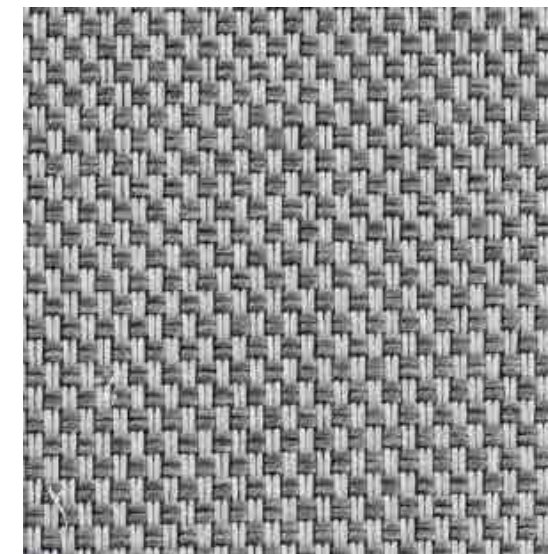
AQUAMARINE (SEF4005)

LEAF (SEF4004)

ORANGE (SEF4007)

# FABRIC

100% POLYPROPYLENE



VITA GRIS 51

WATER AND STAIN REPELLENT/RESISTANT TO UV RAYS



VITA LION 7

VITA GRIS 51

VITA 17

VITA MARENGO 53

VITA VERDE 30

VITA 19

ORANGE(DCF0120001)

# FABRIC

100% POLYPROPYLENE



Fontelina 180

WATER AND STAIN REPELLENT/RESISTANT TO UV RAYS



Fontelina 180

Woolacombe 140

Southend 093

# FABRIC

100% SOLUTION DYED ACRYLIC FABRIC



Canvas (5453)

WATER AND STAIN REPELLENT/RESISTANT TO UV RAYS



WHITE (5404)

CANVAS (5453)

TAUPE (5461)



# ROPE

POLYPROPYLENE



GRASS GREEN(HF-008)

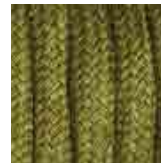
WATER AND STAIN REPELLENT/RESISTANT TO UV RAYS



LIGHTGRAY(HF-44219)



DARK GREY(HF-010)



GRASS GREEN(HF-008)



ORANGE (HF-023)

# ROPE

100% PVC

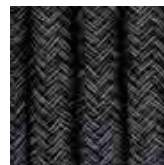


SAND(HF-006)

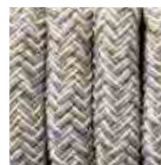
WATER AND STAIN REPELLENT/RESISTANT TO UV RAYS



SAND(HF-006)



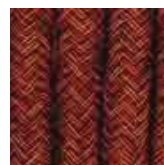
CARBON(HF-009)



APRICOT(HF-021)



NAVY BLUE(HF-008)



NACARAT(HF-036)

# ROPE for LOOP collection

100% PVC



HONEY (HF-021)

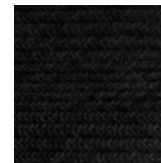
WATER AND STAIN REPELLENT/RESISTANT TO UV RAYS



LIGHT GREY( 44219)



HONEY (HF-021)



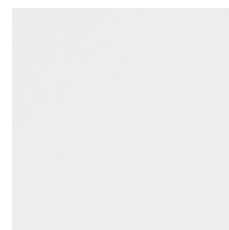
CARBON (HF-009)

KUNDESIGN Rope is a weaved Selected PP fibre. The material has a soft surface that acts like a fabric. Avoid pulling/pushing the material too hard as this may cause it to lose its shape. This weatherproof material withstands changing weather conditions, is UV-resistant which makes it ideal for outdoor use. It is easy to maintain and can be cleaned with ordinary household cleaners.



# FRAME

ALL OUR ALUMINIUM FURNITURE IS POWDER COATED



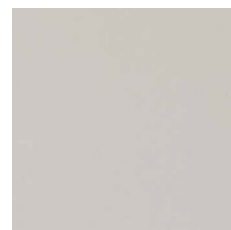
WHITE MAT(1200371)



SAND(70108)



NUTMEG(491098HS)



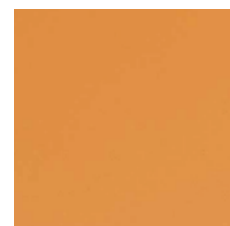
OLIVE GREY(1215966)



SILVER GREY(93328AC)



CURCUM(1216034)



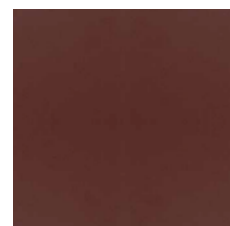
ORANGE(1219624)



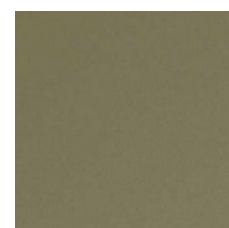
SANDSTONE(48381H)



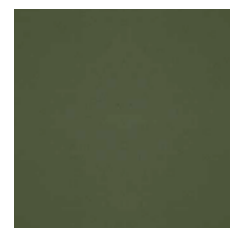
RED OCHER(680-48431H)



TERRA COTTA(14797A)



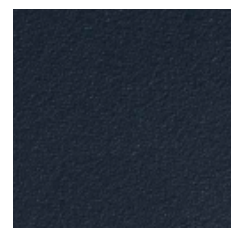
OLIVE(1219626)



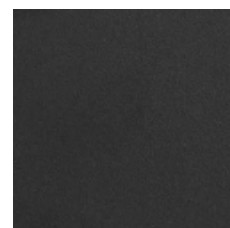
JUNIPER GREEN(14940A)



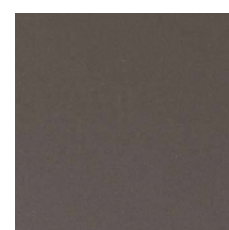
VIVID BLUE(14995A)



MIDNIGHT BLUE(1219623)



BLACK MAT(13569A)



TAUPE(72522)

Powder coating serves as a protective layer that is tinted in a variety of colours. Aluminium furniture is ideal for use outdoors as well as indoors.

# TOP

CERAMIC



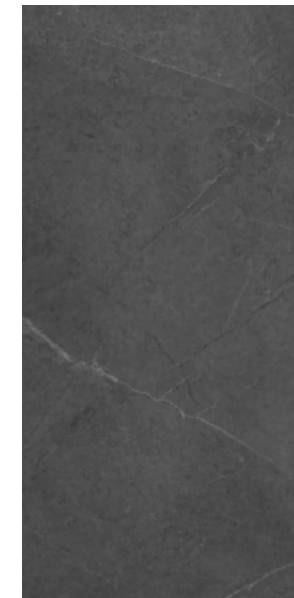
CALACATA GOLD



TRAVERTINO ROMAN



JENNY GREY



HOWARD

# TOP

CERAMIC



JK-11



JK-4



# TOP

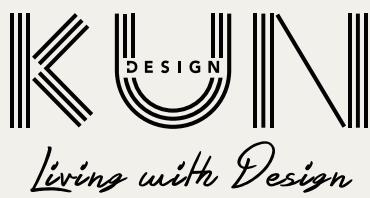
WOOD

---



TEAK





[www.kundesign.com](http://www.kundesign.com)  
[salescn@kundesign.com](mailto:salescn@kundesign.com)